

OREGON CORNER RELOCATION FORM

SECTION 6 TOWNSHIP 4 N RANGE 28 E CORNER LOCATION CODE E-3

COUNTY: UMATILLA DATE: March 1994

CORNER DESIGNATION
SOUTH 1/4 CORNER

___CONDITION REPORT ONLY
___NOT FOUND
___RENEWED
___UNRECORDED
XSURVEYED IN
XREFERENCED OUT

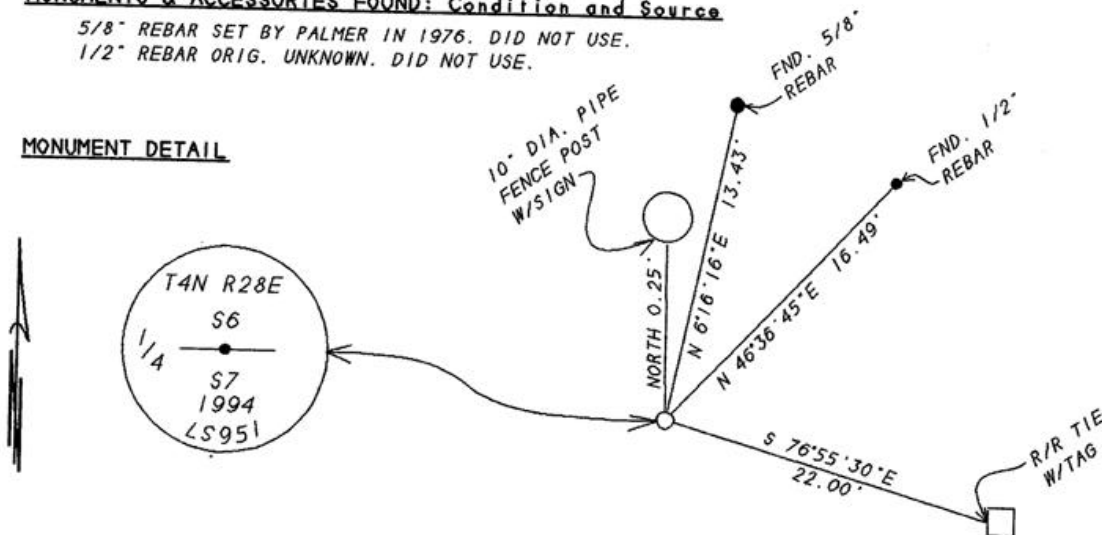
PREVIOUS RENEWALS/SURVEYS, ETC.

ORIGINAL SURVEY BY HAFT IN 1860. CONTRACT NO. 93.
PALMER FOR LAMB WESTON IN 1976.
THIS SURVEY COUNTY NO. 94-022-C. EDWARDS FOR OREGON DOT..

MONUMENTS & ACCESSORIES FOUND: Condition and Source

5/8" REBAR SET BY PALMER IN 1976. DID NOT USE.
1/2" REBAR ORIG. UNKNOWN. DID NOT USE.

MONUMENT DETAIL



MONUMENT SET (Procedures and Description)

BY SINGLE PROPORTION I SET A 1"X30" IRON PIPE WITH A 2 3/8" BRASS CAP STAMPED AS ABOVE.
SEE SURVEY # 94-022-C.

NEW ACCESSORIES

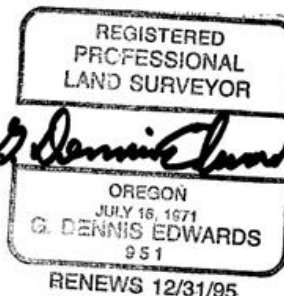
PALMER'S 5/8" REBAR BEARS N 6°16'16"E 13.43 FEET.
FOUND 1/2" REBAR BEARS N 46°36'45" E 16.49 FEET.
ALUM. TAG #951 IN R/R TIE BEARS S 76°55'30"E 22.00 FEET.
SOUTH FACE OF 10" DIA. PIPE FENCE POST BEARS NORTH 0.25 FEET.

LOCATION & COMMENTS

FROM THE INTERSECTION OF BRIDGE ROAD AND LEWIS ROAD GO NORTH 1 MILE ALONG LEWIS ROAD TO 1/4 CORNER.

COMPASS DEC _____
FIRM EDWARDS SURVEYING
P.O. BOX 763
HERMISTON, OR. 97838
PARTY CHIEF D. EDWARDS
NOTES J. COPPOCK
WITNESS J. COPPOCK

SURVEYOR'S SEAL



RECEIVED BY
Umatilla County Surveyors
Date 1-96
Revised by JK
No. 96-12-R