

OREGON CORNER RESTORATION FORM

COUNTY: Umatilla

DATE: October 30, 2007

CORNER DESIGNATION: E-3 S 1/4 Corner Section 6, T. 4 North, Range 28 E.W.M.

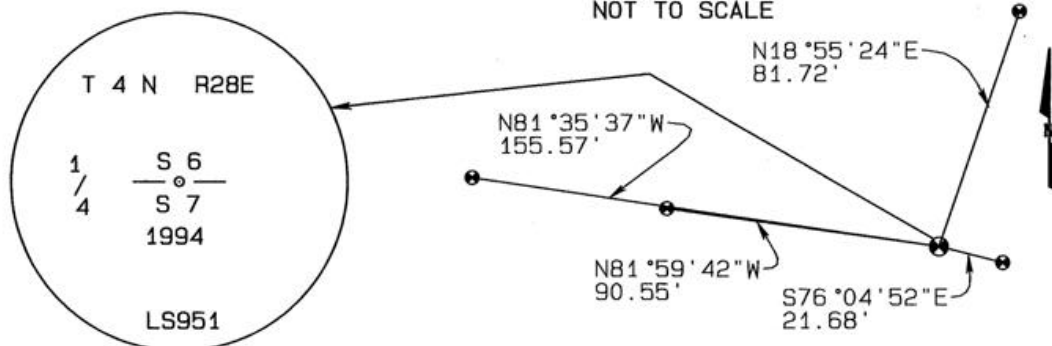
PREVIOUS RENEWALS/SURVEYS ETC.

See Remonumentation Sheet 96-12-R by PLS 951

MONUMENT AND ACCESSORIES FOUND:

Found Edwards' 2-3/8" brass cap on 1" X 30" galvanized iron pipe stamped as shown below. The monument was tied in and removed prior to fence reconstruction which threatened to destroy the monument. After the fence was moved, the monument was shortened to a length of 20" and reset 6" below the road surface. New accessories were set as shown.

MONUMENT MARKING DETAIL



MONUMENT SET (PROCEDURES AND DESCRIPTION):

Prior to fence reconstruction, the Edwards monument was tied and 4 new reference monuments were set. Edwards' monument was shortened to a length of 20" and reset 6" deep upon fence reconstruction.

NEW ACCESSORIES:

A 5/8" X 30" steel rebar with 1-1/4" blue plastic cap bears S76°04'52"E, 21.68 feet. A railroad tie fence post with bearing object tag lies 0.3' east of pin.

A 5/8" X 30" steel rebar with 1-1/4" blue plastic cap bears N18°55'24"E, 81.72 feet. A railroad tie fence post with bearing object tag lies 0.4' east of pin.

A 5/8" X 24" steel rebar with 1-1/4" blue plastic cap bears N81°35'37"W, 155.57 feet. UECA pole #4N28E064002 with bearing object tag attached lies 1.2' north of pin.

A 5/8" X 24" steel rebar with 1-1/4" blue plastic cap bears N81°59'42"W, 90.55 feet. A guy wire anchor with bearing object tag attached lies 0.4' south of pin.

Blue plastic caps are stamped "UCPWD...LS2627"

LOCATION AND COMMENTS:

From the intersection of Bridge Road and Lewis Road go north on Lewis Road for approximately 1 mile to the gate into the Westland Irrigation pump station and the monument.

COMPASS DECLINATION:

N/A

FIRM/AGENCY:

Umatilla County Road Dept.
3920 Westgate
Pendleton, Oregon 97801

PARTY CHIEF:

Gary Roberts

NOTES:

WITNESS:

SURVEYOR'S SEAL

REGISTERED PROFESSIONAL LAND SURVEYOR

Gary R. Roberts
OREGON
JULY 20, 1993
GARY R. ROBERTS
2627

RENEWS 12/31/08

RECEIVED BY
Umatilla County Surveyor
Date 11-07
Rec'd by KK
No. 07-269-R