

# CORNER RESTORATION FORM

Township 4N Range 28E Section 12,11,12 County UMATILLA

State OREGON Date 5-22-2019 Number E-21

Corner Designation : 1,2,11,12

Previous Renewals ORIGINAL SOURCE OF CORNER

ORIGINALLY SURVEYED IN 1860 BY HAFT UNDER CONTRACT #93. HE SET POST IN

GROUND w/TRENCH, MADE PITS & DEPOSITED A PINT OF CHARCOAL.

Accessories Found: \_\_\_\_\_

FOUND NORTHWEST CORNER OF PETROLEUM UNDERGROUND PIPE SIGN, S39°41'E, 56.40 FT.

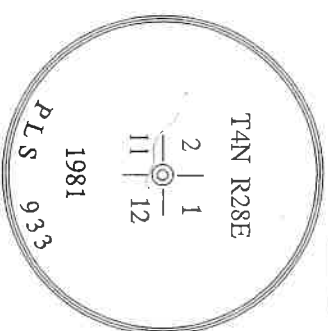
- Condition Report Only
- Not Found
- Renewed
- Surveyed In
- Referenced

### MONUMENT DETAIL

Found  Set

BASIS OF BEARINGS, NAD 83/91 OREGON STATE PLANE  
COORDINATES NORTH ZONE:

Northing: 798191.07  
Easting: 8515673.00



Monument & Accessories Set (Procedure and Description) \_\_\_\_\_

FOUND 2 1/2" BRASS CAP IN MONUMENT WELL 11" BELOW AC, PER COUNTY SURVEY NO. S-156-C.

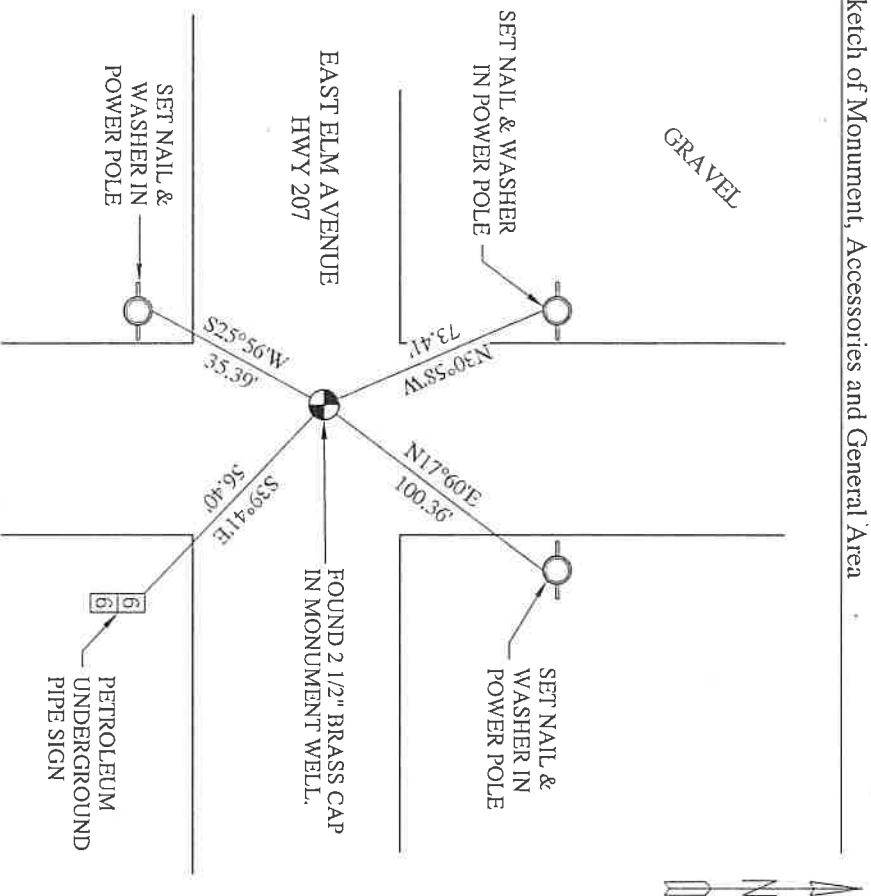
SET 1 1/2" STEEL WASHER MARKED 61420, IN POWER POLE w/MAG NAIL APPROX. 2' ABOVE GRADE & BEARING OBJECT SIGN, N30°58'W, 73.41 FT.

SET 1 1/2" STEEL WASHER MARKED 61420, IN POWER POLE w/MAG NAIL APPROX. 2' ABOVE GRADE, N17°60'E, 100.36 FT.

NW CORNER OF A PETROLEUM SIGN'S, S39°41'E, 56.40 FT.

SET 1 1/2" STEEL WASHER MARKED 61420, IN POWER POLE w/MAG NAIL APPROX. 2' ABOVE GRADE, S25°56'W, 35.39 FT.

Sketch of Monument, Accessories and General Area



**REGISTERED PROFESSIONAL LAND SURVEYOR**

*Lance Clark King*  
**OREGON**  
**MAY 10, 2011**  
**LANCE CLARK KING**  
**61420**

**RENEWALS: 6/30/2021**

Agency: CK3, LLC  
 945 W. ORCHARD  
 HERMISTON OREGON 97838  
 OFFICE: 541-567-2345  
 FAX: 541-567-2305  
 WEB: CK3LLC.NET  
 Field Book # 0-325

COUNTY SURVEYOR  
RECORDING INFO

Received \_\_\_\_\_  
 Filled \_\_\_\_\_  
 Survey No. \_\_\_\_\_  
 Drawing No. \_\_\_\_\_  
 Index No. E-21

19-080-C