

OREGON CORNER RESTORATION FORM

SECTION 1,6,7,12 TOWNSHIP 4 NORTH RANGE 27,28 EAST E-1
 COUNTY : UMATILLA DATE AUG/21

CORNER DESIGNATION
 SECTION CORNER

- CONDITION REPORT ONLY
- NOT FOUND
- RENEWED
- UNCOVERED
- SURVEYED IN
- REFERENCED

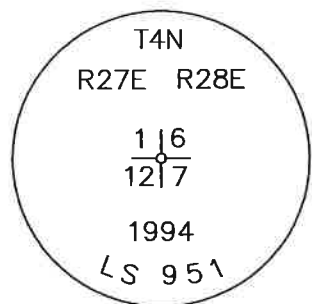
PREVIOUS RENEWALS / SURVEYS, ETC.

SURVEYED IN 1860 BY HAFT. SURVEYED IN 1941 BY GOULD. LS 933 SET MONUMENT IN 1974. LS 951 RESET THE MONUMENT IN 1994. SEE RECORD OF SURVEY 94-022-C.

MONUMENTS AND ACCESSORIES FOUND: CONDITION AND SOURCE

I RECOVERED THE CORNER AND COMPARED ITS LOCATION WITH DUAL MONUMENTATION IN THE AREA AS REQUESTED. PLEASE REFER TO TO RECORD OF SURVEY THAT WAS RECORDED ALONG WITH THIS CORNER RESTORATION FORM FOR MY ANALYSES. THE ACCESSORIES FOR THE CORNER WERE NOT RECOVERED DURING THIS SURVEY DUE TO THE FACT IT HAD NO BEARING ON THE CORNERS LOCATION. PLEASE REFER TO SURVEY NUMBER 19-080-C AND THE CORNER RESTORATION FORMS RECORDED WITH SAID RECORD OF SURVEY FOR ACCESSORY INFORMATION.

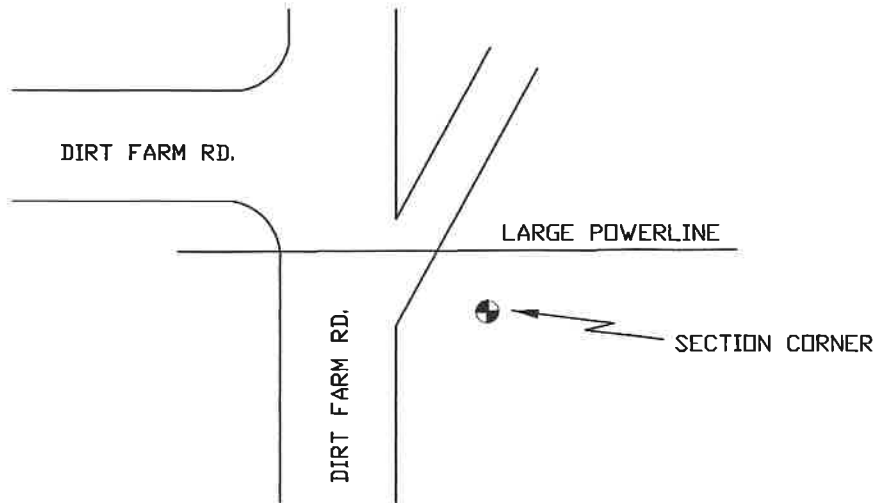
MONUMENT DETAIL



NAD 83/91
 OREGON STATE PLANE
 INTERNATIONAL FEET

798023.60
 8489423.36

SKETCH



MONUMENT SET (PROCEDURES AND DESCRIPTION)

NEW ACCESSORIES FROM WHICH

LOCATION AND COMMENTS

FROM THE WESTERLY END OF BRIDGE ROAD CROSS OVER INTERSTATE 82 TO FRONTAGE ROAD THEN FOLLOW FRONTAGE ROAD NORTHEASTERLY TO THE RANGE LINE THEN GO NORTHERLY ALONG A GRAVEL ROAD 0.35 MILE TO THE CORNER.

FIRM/AGENCY

PRIMM LAND SURVEYING, INC.
 P.O. BOX 1322
 HERMISTON, OREGON 97838

LAND SURVEYOR

BRIT L. PRIMM

WITNESS

KEITH P. PRIMM

SURVEYOR'S SEAL

REGISTERED
 PROFESSIONAL
 LAND SURVEYOR

OREGON
 JULY 13, 1999
 BRIT L. PRIMM
 48509

EXPIRATION DATE: 12/31/22