

OREGON CORNER RESTORATION FORM

SECTION 6 TOWNSHIP 4N RANGE 28E CORNER LOCATION CODE C-5

COUNTY: UMATILLA DATE: March 1994

CORNER DESIGNATION

EAST 1/4 CORNER

- CONDITION REPORT ONLY
- NOT FOUND
- RENEWED
- UNRECORDED
- SURVEYED IN
- REFERENCED OUT

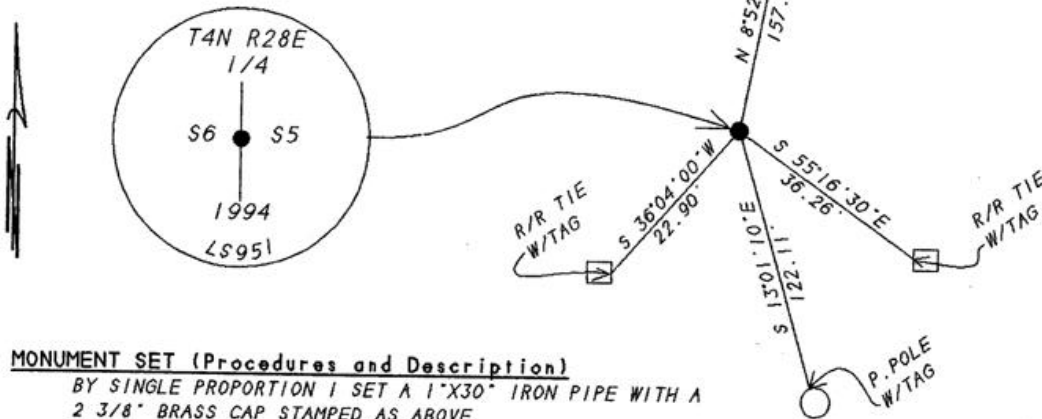
PREVIOUS RENEWALS/SURVEYS, ETC.

ORIGINAL SURVEY BY HAFT IN 1860. CONTRACT NO. 93
SECTION 6 SURVEYED BY PALMER IN 1976 FOR LAMB WESTON.
THIS SURVEY COUNTY NO. 94-022-C. EDWARDS FOR OREGON DOT..

MONUMENTS & ACCESSORIES FOUND: Condition and Source

NO MONUMENTS FOUND

MONUMENT DETAIL



MONUMENT SET (Procedures and Description)

BY SINGLE PROPORTION I SET A 1"X30" IRON PIPE WITH A 2 3/8" BRASS CAP STAMPED AS ABOVE.
SEE MY SURVEY COUNTY NO. 94-022-C.

NEW ACCESSORIES

- ALUM. TAG #951 IN POWER POLE BEARS N 8°52'50"E 157.48 FEET.
- ALUM. TAG #951 IN R/R TIE BEARS S 55°16'30"E 36.26 FEET.
- ALUM. TAG #951 IN POWER POLE BEARS S13°01'10"E 122.11 FEET.
- ALUM. TAG #951 IN R/R TIE BEARS S 36°04'00"W 22.90 FEET.

LOCATION & COMMENTS

FROM THE INTERSECTION OF BRIDGE ROAD AND AGNEW ROAD GO NORTH ALONG AGNEW ROAD 1 1/2 MILES TO THE 1/4 CORNER.

COMPASS DEC. _____
 FIRM EDWARDS SURVEYING
P.O. BOX 763
HERMISTON, OR. 97838
 PARTY CHIEF D. EDWARDS
 NOTES J. COPPOCK
 WITNESS J. COPPOCK

SURVEYOR'S SEAL

REGISTERED PROFESSIONAL LAND SURVEYOR

G. Dennis Edwards

OREGON
JULY 16, 1971
G. DENNIS EDWARDS
951

RENEWS 12/31/95

RECEIVED BY

Umatilla County Surveyor

Date 1-96

Rec'd by KK

No. 96-12R