

OREGON CORNER RESTORATION FORM

SECTION 6 TOWNSHIP 4 NORTH RANGE 28 EAST

A-3

COUNTY : UMATILLA DATE AUG/21

CORNER DESIGNATION

1/4 CORNER

CONDITION REPORT ONLY

NOT FOUND

RENEWED

UNCOVERED

SURVEYED IN

REFERENCED

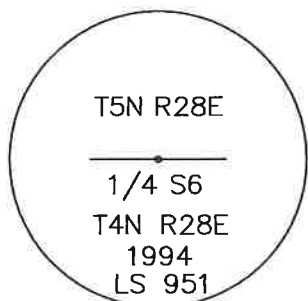
PREVIOUS RENEWALS / SURVEYS, ETC.

SURVEYED IN 1860 BY HAFT. SURVEYED IN 1941 BY GOULD. LS 933 RESET THE MONUMENT IN 1980. SEE RECORD OF SURVEY S-156-C. LS 951 RESET THE MONUMENT IN 1980, SEE RECORD OF SURVEY 94-022-C.

MONUMENTS AND ACCESSORIES FOUND: CONDITION AND SOURCE

I RECOVERED THE CORNER AND COMPARED ITS LOCATION WITH DUAL MONUMENTATION IN THE AREA AS REQUESTED. PLEASE REFER TO TO RECORD OF SURVEY THAT WAS RECORDED ALONG WITH THIS CORNER RESTORATION FORM FOR MY ANALYSES. THE ACCESSORIES FOR THE CORNER WERE NOT RECOVERED DURING THIS SURVEY DUE TO THE FACT IT HAD NO BEARING ON THE CORNERS LOCATION. PLEASE REFER TO SURVEY NUMBER 19-080-C AND THE CORNER RESTORATION FORMS RECORDED WITH SAID RECORD OF SURVEY FOR ACCESSORY INFORMATION.

MONUMENT DETAIL

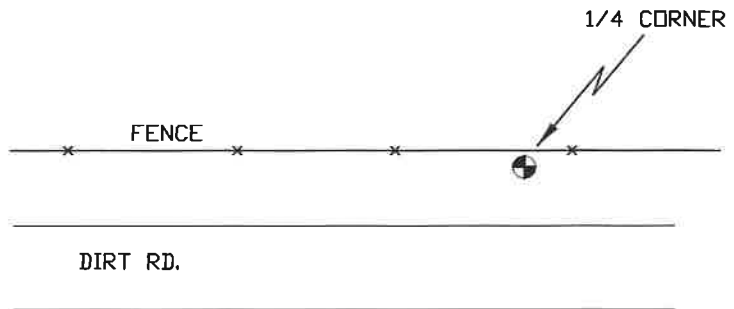


N.T.S

NAD 83/91
OREGON STATE PLANE
INTERNATIONAL FEET

803442.60
8491800.29

SKETCH



MONUMENT SET (PROCEDURES AND DESCRIPTION)

NEW ACCESSORIES FROM WHICH

LOCATION AND COMMENTS

FROM THE WESTERLY END OF FRONTAGE ROAD ON THE NORTHERLY SIDE OF INTERSTATE 82 ON THE TOWNSHIP LINE GO WESTERLY ALONG A FENCE LINE ±0.8 MILES TO THE CORNER.

FIRM/AGENCY

PRIMM LAND SURVEYING, INC.
P.O. BOX 1322
HERMISTON, OREGON 97838

LAND SURVEYOR

BRIT L. PRIMM

WITNESS

KEITH P. PRIMM

SURVEYOR'S SEAL

REGISTERED
PROFESSIONAL
LAND SURVEYOR

OREGON
JULY 13, 1999
BRIT L. PRIMM
48509

EXPIRATION DATE: 12/31/22