

OREGON CORNER RESTORATION FORM

SECTION 1,2,35 TOWNSHIP 4,5 NORTH RANGE 28 EAST A-21
 COUNTY : UMATILLA DATE AUG/21

CORNER DESIGNATION
 SECTION CORNER

- CONDITION REPORT ONLY
- NOT FOUND
- RENEWED
- UNCOVERED
- SURVEYED IN
- REFERENCED

PREVIOUS RENEWALS / SURVEYS, ETC.

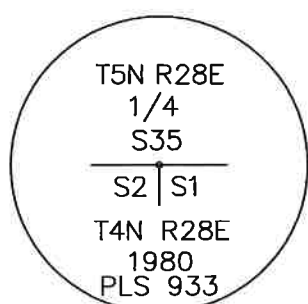
SURVEYED BY MAXTON AND HURD IN 1860. SURVEYED BY HAFT IN 1860. LS 933 RESET THE MONUMENT IN 1980, SEE RECORD OF SURVEY S-156-C.

MONUMENTS AND ACCESSORIES FOUND: CONDITION AND SOURCE

I RECOVERED THE CORNER AND COMPARED ITS LOCATION WITH DUAL MONUMENTATION IN THE AREA AS REQUESTED. PLEASE REFER TO TO RECORD OF SURVEY THAT WAS RECORDED ALONG WITH THIS CORNER RESTORATION FORM FOR MY ANALYSES. THE ACCESSORIES FOR THE CORNER WERE NOT RECOVERED DURING THIS SURVEY DUE TO THE FACT IT HAD NO BEARING ON THE CORNERS LOCATION. PLEASE REFER TO SURVEY NUMBER 19-080-C AND THE CORNER RESTORATION FORMS RECORDED WITH SAID RECORD OF SURVEY FOR ACCESSORY INFORMATION.

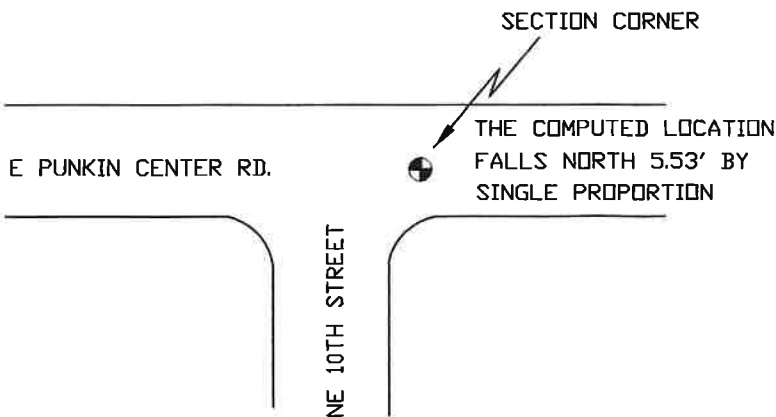
MONUMENT DETAIL

SKETCH



NAD 83/91
 OREGON STATE PLANE
 INTERNATIONAL FEET

803698.36
 8515640.69



MONUMENT SET (PROCEDURES AND DESCRIPTION)

NEW ACCESSORIES FROM WHICH

LOCATION AND COMMENTS

THE CORNER IS AT THE INTERSECTIONS OF EAST PUNKIN CENTER ROAD AND NORTHEAST 10TH STREET.

FIRM/AGENCY

PRIMM LAND SURVEYING, INC.
 P.O. BOX 1322
 HERMISTON, OREGON 97838

LAND SURVEYOR

BRIT L. PRIMM

WITNESS

KEITH P. PRIMM

SURVEYOR'S SEAL

REGISTERED
 PROFESSIONAL
 LAND SURVEYOR

OREGON
 JULY 13, 1999
 BRIT L. PRIMM
 48509

EXPIRATION DATE: 12/31/22