

# OREGON CORNER RESTORATION FORM

SECTION 35 TOWNSHIP 4 NORTH RANGE 27 EAST

X-21

COUNTY : UMATILLA DATE 12/02

CORNER DESIGNATION

E 1/4 CORNER

CONDITION REPORT ONLY

NOT FOUND

RENEWED

UNCOVERED

SURVEYED IN

REFERENCED

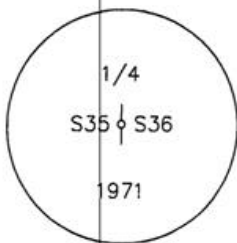
PREVIOUS RENEWALS / SURVEYS, ETC.

ORIGINALLY SURVEYED UNDER CONTRACT #209 IN 1874 BY WALDEN.  
THOMPSON SURVEY FOR HULIT CS #237-AX.

MONUMENTS AND ACCESSORIES FOUND: CONDITION AND SOURCE

A 2 1/2" BRASS CAP.

MONUMENT DETAIL

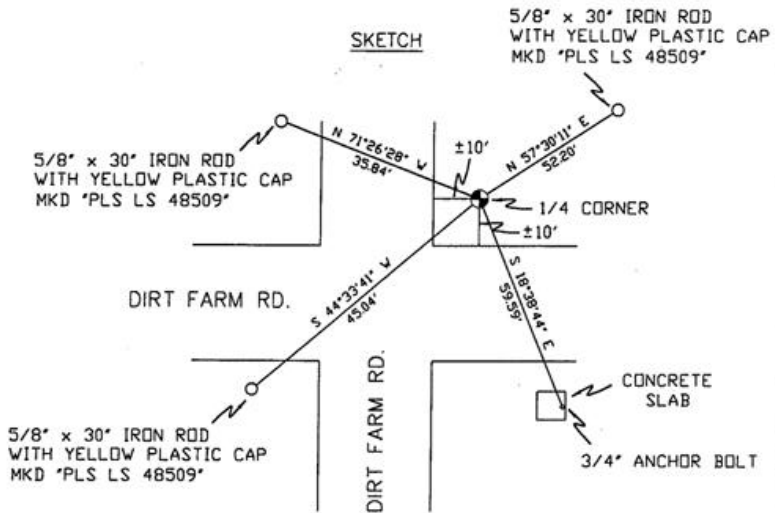


NAD 83/91  
OREGON STATE PLANE  
INTERNATIONAL FEET

774161.0235  
8484434.0249



SKETCH



MONUMENT SET ( PROCEDURES AND DESCRIPTION )

NEW ACCESSORIES FROM WHICH

- A 5/8" x 30" IRON ROD WITH A YELLOW PLASTIC CAP MKD "PLS LS 48509" LIES N 57°30'11" E, 52.20 FEET.
- A 3/4" ANCHOR BOLT ON THE EAST EDGE OF A CONCRETE SLAB LIES S 18°38'44" E, 59.59 FEET.
- A 5/8" x 30" IRON ROD WITH A YELLOW PLASTIC CAP MKD "PLS LS 48509" LIES S 44°33'41" W, 45.04 FEET.
- A 5/8" x 30" IRON ROD WITH A YELLOW PLASTIC CAP MKD "PLS LS 48509" LIES N 71°26'28" W, 35.84 FEET.

LOCATION AND COMMENTS

FROM INTERSECTION OF COL. JORDAN RD. AND STAFFORD HANSELL RD. GO WEST ALONG STAFFORD HANSELL RD. 1.0 MILE TO A GRAVEL RD. SOUTH AND THEN SOUTH 0.65 MILES TO A DIRT FARM RD. EAST-WEST AND THE CORNER, CORNER HAS A ROCK COLLAR.

COMPASS DEC.

FIRM/AGENCY  
PRIMM LAND SURVEYING  
P.O. BOX 1322  
HERMISTON, OREGON 97838

PARTY CHIEF  
KEITH P. PRIMM

NOTES

WITNESS  
BRIT L. PRIMM

SURVEYOR'S SEAL

REGISTERED  
PROFESSIONAL  
LAND SURVEYOR

*Brit L. Primm*  
OREGON  
JULY 13, 1999  
BRIT L. PRIMM  
48509

EXPIRATION DATE: 12/31/04

03-49-9