

# OREGON CORNER RESTORATION FORM

SECTION 28 TOWNSHIP 4 NORTH RANGE 27 EAST

T-13

COUNTY : UMATILLA DATE 12/02

CORNER DESIGNATION

E 1/4 CORNER

CONDITION REPORT ONLY

NOT FOUND

RENEWED

UNCOVERED

SURVEYED IN

REFERENCED

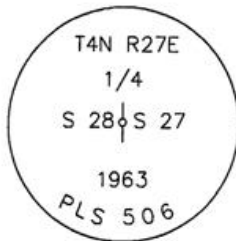
PREVIOUS RENEWALS / SURVEYS, ETC.

ORIGINALLY SURVEYED UNDER CONTRACT #209 IN 1874 BY WALDEN.  
THOMPSON 1963 SURVEY FOR HANSELL.

MONUMENTS AND ACCESSORIES FOUND: CONDITION AND SOURCE

A 2 1/2" BRASS CAP.

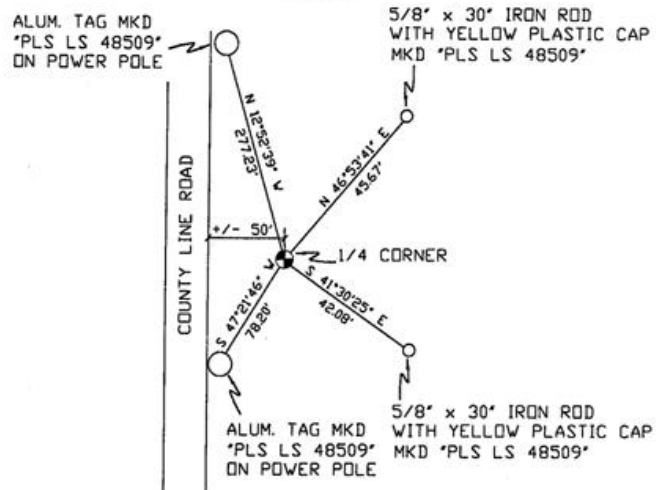
MONUMENT DETAIL



NAD 83/91  
OREGON STATE PLANE  
INTERNATIONAL FEET

779306.6292  
8473757.7653

SKETCH



MONUMENT SET ( PROCEDURES AND DESCRIPTION )

NEW ACCESSORIES FROM WHICH

AN ALUMINUM TAG "PLS LS 48509" ON A POWER POLE LIES N 12°52'39" W, 277.23 FEET.  
A 5/8" x 30" IRON ROD WITH A YELLOW PLASTIC CAP MKD "PLS LS 48509" LIES N 46°53'41" E, 45.67 FEET.  
AN ALUMINUM TAG "PLS LS 48509" ON A POWER POLE LIES S 47°21'46" W, 78.20 FEET.  
A 5/8" x 30" IRON ROD WITH A YELLOW PLASTIC CAP MKD "PLS LS 48509" LIES S 41°30'25" E, 42.08 FEET.

LOCATION AND COMMENTS

FROM THE INTERSECTION OF COUNTY LINE RD. AND FRONTAGE RD. GO SOUTH 0.2 MI. TO CORNER, CORNER FALLS +/- 50 FT EAST OF EAST EDGE OF COUNTY LINE RD.

COMPASS DEC.

FIRM/AGENCY  
PRIMM LAND SURVEYING  
P.O. BOX 1322  
HERMISTON, OREGON 97838

PARTY CHIEF  
KEITH P. PRIMM

NOTES

WITNESS  
BRIT L. PRIMM

SURVEYOR'S SEAL

REGISTERED  
PROFESSIONAL  
LAND SURVEYOR

*BRIT L. PRIMM*  
OREGON  
JULY 13, 1999  
BRIT L. PRIMM  
48509

EXPIRATION DATE: 12/31/04

03-49-9