

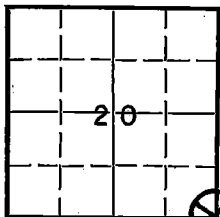
LAND CORNER RECORD

(Rectangular)

LL 5680-2

1. T 3S R 32E No. R9 Cor. Sec Mer Will State Oregon N. F. Umatilla Dist. Ukiah 4

2. Corner Status



21

29

28

7. Photo Identification

Photo No. _____

Ident. By: _____

8. Plane Coordinate Position Data

State _____ Zone _____

X _____

Y _____

Estab. By _____

Field Book No. _____

Where Filed _____

9. Evaluation

Authentic _____Needs Verif. Monument NoRe-estab. Survey _____Land Status P.D.

3. Original Description _____ Vol. _____ Page _____ Where Recorded _____

4. Description of Corners: A Basalt stone 18" x 10" x 4" 12" in ground. On slight N. slope. Marked 2 notches on S, and 4 notches on E edge.
 32" pine N 42 E 35 lks Marked T3S, R 32 E S 21 BT
 14" pine S 46 E 161 lks Marked T3S, R 32 E S 28 BT
 16" pine S 56 W 6 lks Marked T3S, R 32 E S 29 BT

5. Investigation Notes: Stone found, fits description, Good condition. Accessories found are 42" ponderosa pine N 42 E, 35 lks Fair Vi Vigor; 24" ponderosa pine S 56 W, 6 lks - Dead; 34" ponderosa pine S 46 E 161 lks - Good Vigor

6. Signed _____ Title _____ Date _____

