

RECORD OF LAND CORNER MONUMENTATION

NORTHEAST CORNER SECTION 22, T. 3 S., R. 32 E., W.M.

16	15	15	14
21	22	22	23
21	22	22	23
28	27	27	26

ORIGINALLY ESTABLISHED BY: George S. Pershin, U.S. Deputy Surveyor

CONTRACT NUMBER: 430

CONTRACT DATE: March 23, 1882

SUBSEQUENT SURVEYS:

- ▶ 1977 Remonumentation by Craig L. Wanless, BLM Cadastral Surveyor, under special instructions dated May 3, 1957, Group No. 350, approved May 6, 1957.

ORIGINAL DESCRIPTION: Set a basalt stone 16 x 8 x 8 ins 11 ins in ground on west Slope for cor to sec 14, 15, 22 and 23. Marked with 3 notches on S. and 2 notches on E edges ascent about 100 ft.

A Pine 20 ins. di. brs. N.70°E. 69 lks dist marked T3S. R.32E. S14 B.T.

A Fir 10 ins. di. brs. S.38°E. 62 lks dist marked T3S. R.32E. S.23 B.T.

A Fir 11 in. di. brs. S.57°W. 24 lks. dist. marked T3S. R.32E. S.22 B.T.

A Fir 12 ins. di. brs. N.8°W. 26 lks dist marked T3S. R.32E. S.15 B.T.

1977 DESCRIPTION: The cor. of secs. 14, 15, 22, and 23, monumented with the original unmarked basalt stone, 16 x 8 x 8 ins., firmly set 6 ins. in the ground, and in a mound of stone, 2 ft. base, 6 ins. high, from which the remains of the original bearing trees:

A pine, 42 ins. diam., bears N. 70° E., 69 lks. dist., with healed blaze.

A decayed fir stump, size indeterminate, bears S. 38° E., 65 lks. dist., no marks visible. (Record, 62 lks.)

A decayed fir stump, size indeterminate, bears S. 57° W., 24 lks. dist., no marks visible.

A decayed fir stump, size indeterminate, bears N. 8° W., 26 lks. dist., no marks visible.

At the corner point Set an iron post, 28 ins. long, 2 ½ ins. diam., 22 ins. in the ground, and in a mound of stone, 2 ½ ft. base, to top, with brass cap mkd. (diagram shown) from which new bearing trees

A grand fir, 11 ins. diam., bears S. 27 ½° E., 90 lks. dist., mkd. T3S R32E S23 BT.

A grand fir, 15 ins. diam., bears S. 57 ½° W., 37 lks. dist., mkd. T3S R32E S22 BT.

A grand fir, 14 ins. diam., bears N. 69° W., 51 lks. dist., mkd. T3S R32E S15 BT.

EVIDENCE FOUND: Found a 2½" galvanized iron pipe with 3¼" BLM brass cap marked as shown below, projecting 2" above ground in a 3 ft. diameter mound of stone. From which, a ponderosa pine 45" dbh, bears N.70°E., 45.5 ft. with fully healed blaze (GLO bearing tree). All other bearing trees of record are dead and down.

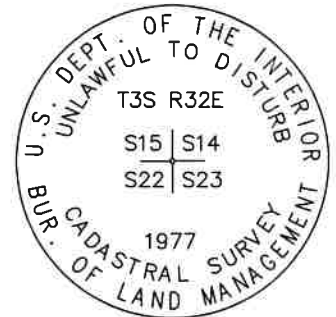
DESCRIPTION OF MONUMENTS AND ACCESSORIES SET AND METHODS USED:

I accept the found BLM monument as a perpetuation of the original corner.

CORNER MONUMENT MARKED:

From which, **I SCRIBE NEW BEARING TREES:**

- ▶ An Engelmann spruce, 20" dbh, bears N.05°W., 39.88 ft. marked T3SR32ES15 in upper blaze and BT in lower blaze
- ▶ A western larch, 8" dbh, bears S.04°W., 49.93 ft. marked X in upper blaze and BT in lower blaze
- ▶ A Douglas-fir, 9" dbh, bears N.88°W., 13.46 ft. marked X in upper blaze and BT in lower blaze



Painted a 6 inch red band around each BT, and also painted blazes red and attached USFS 54-3 and 54-9 signs. Used RTK GPS to measure accessories. Distances to new BT's measured to a Mag Spike driven in the side-center at the root crown, with an attached 1½" aluminum washer stamped PLS 69454. Bearings are geodetic, derived by GPS observation at the corner. Set an aluminum guard post north, 4 ft. with USFS 54-2 sign attached, and another guard post west, 4.5 ft. with USFS 54-2 and 54-9 signs attached. The corner of fences running north and west bears N.68°W., 23 ft. from the corner.

RESTORATION BY, STAMP AND DATE:

Work completed June 25, 2024 by:

Jason L. Hatfield, PLS
 Vince L. Kelly, Survey Technician
 Spencer B. Jones, Survey Technician

USDA FOREST SERVICE
 NORTHEAST OREGON LAND ZONE
 1550 Dewey Avenue, Suite A
 Baker City, OR 97814
 (541) 523-1283



EXPIRES: 6/30/2025

24-078-6