

OREGON CORNER RESTORATION FORM

Section 27 Township 3S Range 31E
 County Umatilla Date: October 26, 2000

Corner Designation: 3S31T13

Common quarter corner to sections 27 and 28, T3S, R31E, W.M., Umatilla County, Oregon.

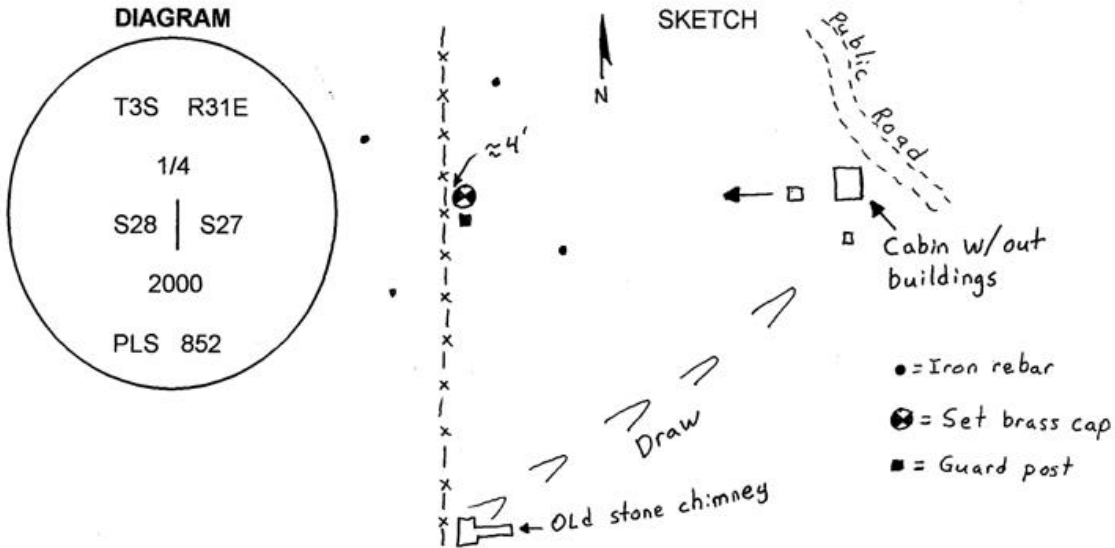
Previous Renewals / Surveys, etc.

Corner originally set by George S. Pershin under contract #319 dated March 26, 1879. His record reads: Set granite stone, 16 x 12 x 5 on S.W. slope for 1/4 section cor. from which:
 A pine, 18 ins. diam., brs. N.62°E., 11 lks. dist..
 A fir, 10 ins. diam., brs. N.51°W. 17 lks. dist..

Condition Report Only
 Not found
 Remonumented
 Unrecorded
 Surveyed in
 Referenced out

Monument and Accessories found: (condition and source)

A granite stone 16 x 12 x 5, plainly chiseled 1/4 on the east face, firmly in place. A sawed fir stump with the bottom of a pitched up face visible in the stump. No scribing was visible.



MONUMENT (S) AND ACCESSORIES SET (Procedures and Description)

Set a 1 1/2" x 30" galvanized iron pipe with a 2 1/4" brass cap stamped as shown in the diagram above at the position of the original stone. Set a 6' steel post with a county monument sign attached along side. Buried the original stone at the foot of the pipe.

For references, I set four 5/8" by 24" rebars with 1 1/8" red plastic caps stamped ORLS 852, and WALS 13922 as described below:

- an iron rebar bears N48°37'37"W, 44.07 feet;
- an iron rebar bears N13°08'24"E, 50.86 feet;
- an iron rebar bears S34°02'23"W, 37.45 feet;
- an iron rebar bears S50°45'56"E, 51.72 feet;

The monument and references were tied using a LIECA system 300 RTK GPS.

Location and comments

Compass Declination
 Bearings shown are true.

Surveyors Seal

RECEIVED BY:
 Umatilla County Surveyor
 Date: 11-00
 Rec'd By: KK
 No. 00-201-B
252

Firm / Agency
 Haddock Surveying
 Address
 P.O. Box 1574
 Pendleton, Or. 97801
 Party Chief
 Stephen K, Haddock

REGISTERED
 PROFESSIONAL
 LAND SURVEYOR

David L. Haddock

OREGON
 JULY 12, 1908
 DAVID L. HADDOCK
 852

RENEWS 6-30-01