

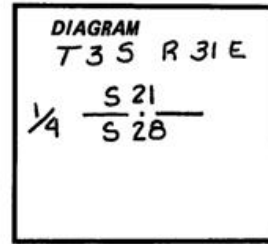
K-11

History of original corner establishment:

May 12, 1879 a Pine Post was set for the one-quarter corner.

B.T.'s were: A 14" diameter Tamarack Bears North 25° East 49 lks.

A 8" diameter Tamarack Bears South 12° East 47 lks.



Description of corner evidence found:

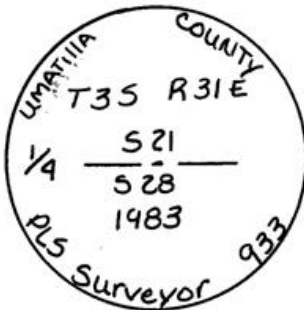
A 11" diameter Tamarack down with scribing $1\frac{1}{4}$ visible.

A 9" diameter Tamarack down with scribing visible.

Location of tree stumps were determinable to set one-quarter corner in original position.

Description of monument and accessories established to perpetuate the original location of this corner:

At the corner set $2\frac{1}{2}$ " diameter Brass Cap on $1\frac{1}{2}$ " x 30" Galvanized Pipe 24" in ground stamped:



Bearing Trees:

A 12" diameter Douglas Fir bears South 52°30' West a distance of 41.25 feet scribed one-quarter S 28 BT.

A 10" diameter Douglas Fir bears North 56°30' East a distance of 38.05 feet scribed one-quarter S 21 BT.

Trees were painted Red with "Bearing Tree" and "Witness Post" signs nailed to the trees.

Trees also have Brass Washer nailed below the BT scribe stamped:



Office of County Surveyor County of Umatilla
 State of Oregon I hereby certify that the within instrument was filed in this office
 for record on the 20th day of April 1983
 David H. Leland County Official Betty L. Cochran (DEPUTY)

R-11

83-78-R