

OREGON CORNER RESTORATION FORM

Section 32 Township 3S Range 29E
 County Umatilla Date: 7-Apr-22

Corner Designation: 3S2925 X Condition report only
 Not Found
 Remonumented
 Unrecorded
 Surveyed In
 Referenced Out

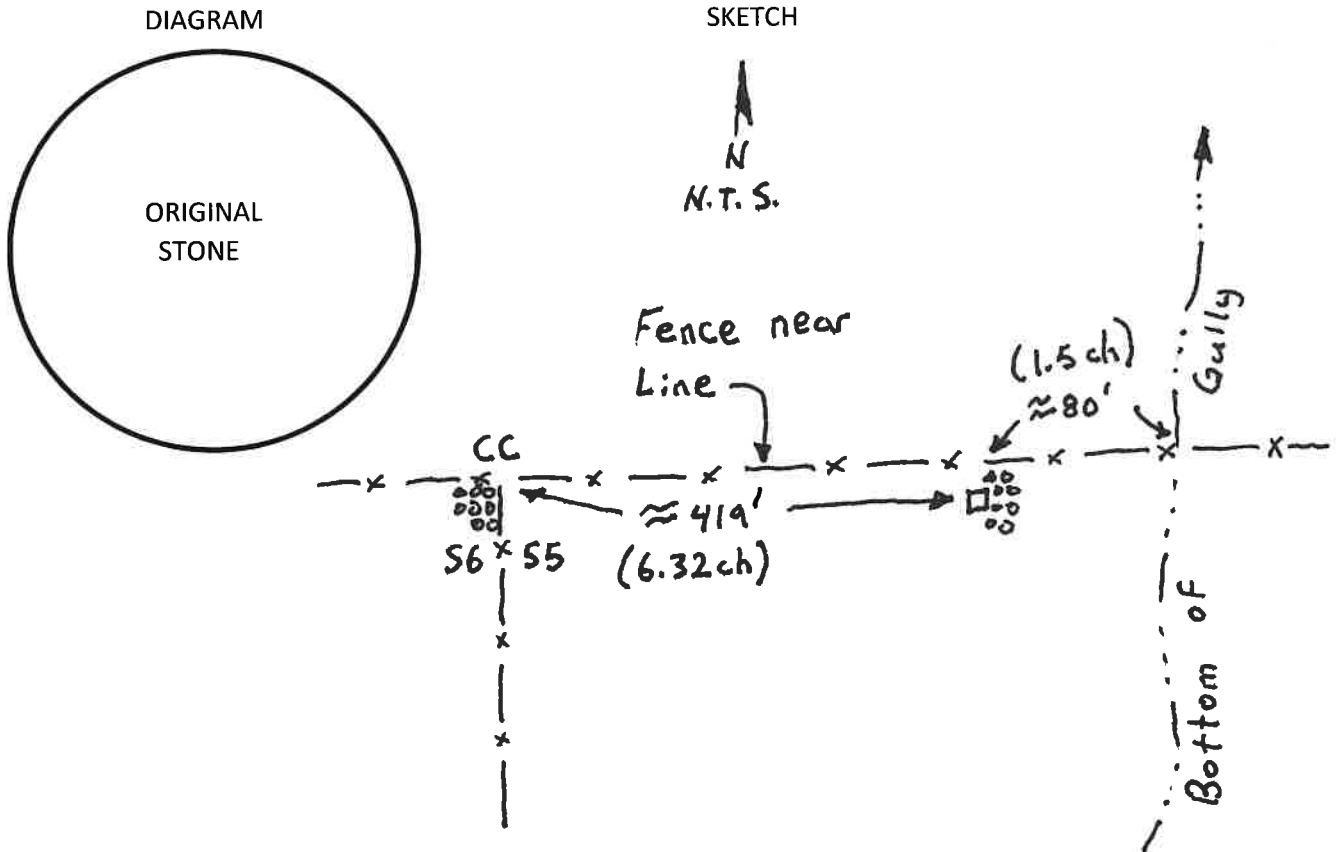
South corner to Sections 31 and 32 only, T3S, R29E, W.M.,
 Umatilla County, Oregon.

Previous Renewals, Surveys, etc...

This corner was originally set by George Pershin under Contract No. 332, Dated July 29th, 1879. His record reads: Set basalt stone 20x14x7 on E. face of spur and marked post in mound of stone.

Monument and accessories found: (condition and source)

Found a basalt stone 20x14x7 plainly notched with 5 notches on the east edge lying on its side in the remains of the stone mound.



MONUMENT(S) AND ACCESSORIES SET (Procedures and Description)

At the corner point I dig and reset the original stone 14 inches in the ground in a vertical position with the notches on the east edge facing the north. I rebuilt the mound of stone 3' diameter and 1.5' high on the east side of the stone. The work was witnessed by Mr. Charles Doherty, 1214 NW King Avenue, Pendleton, OR 97801.

Measurements were made with a Trimble R8S base/rover RTK GPS system.

Location and comments:

Approximate coordinate SP NAD83
 Northing = 582085.2'
 Easting = 8556039.9'

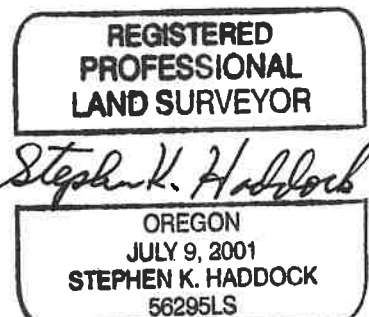
RECEIVED BY:

Umatilla County Surveyor
 Date: 8/1/22
 Rec'd By: CT
 No. 22-083-C

Compass Declination

Firm / Agency
 Witness Tree Surveying
 Address
 P.O. Box G
 Pilot Rock, OR 97868
 Party Chief
 Stephen K. Haddock

Surveyor's Seal



RENEWS: 6-30-23