

OREGON CORNER RESTORATION FORM

Section 04 Township 03 N Range 34 E, W.M. Corner Code No.     

County Umatilla Date 5-5-93

CORNER DESIGNATION

Quarter Corner common to S4 & S9

- Condition Report Only
- Not Found
- Renewed
- Unrecorded
- Surveyed In
- Referenced Out

E-11

Previous Renewals/Surveys, etc. Corner originally set by W. Odell in 1867 was a post w/ charred stake, mounds, and pits.

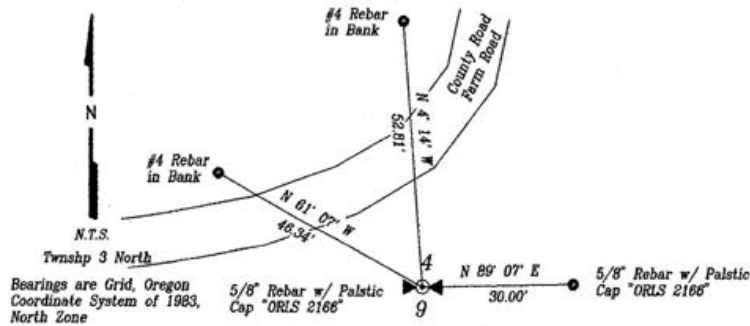
No record of any perpetuation.

Monument(s) & Accessories Found: (Condition and Source)

No monument found.

Monument Detail

Sketch



Monument Set (Procedures and Description)

Set a 5/8" rebar w/ plastic cap "ORLS 2166" for corner, buried 16" deep in a tilled field.

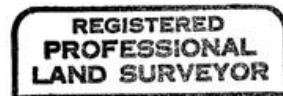
New Accessories

- A #4 rebar bears N 61° 07' W, 46.34', in bank north of road;
- A #4 rebar bears N 4° 14' W, 52.81', in bank north of road;
- A 5/8" rebar w/ plastic cap "ORLS 2166" bears N 89° 07' E, along section line, 30.00' at county road right of way, in a tilled field, buried 16" deep.

Location & Comments

Surveyor's Seal

Corner is located at the \_\_\_\_\_ Compass Declination \_\_\_\_\_  
 corner of a county / farm \_\_\_\_\_ Firm/Agency \_\_\_\_\_  
 road in field to south. \_\_\_\_\_ Dwight M. Bartleson L.S. \_\_\_\_\_  
 \_\_\_\_\_ Address Rt. 1, Box 46 \_\_\_\_\_



**RECEIVED BY** \_\_\_\_\_  
 Umatilla County Surveyor's Office \_\_\_\_\_  
 Date 5-93 \_\_\_\_\_  
 Rec'd By KR \_\_\_\_\_  
 No. 93-48-B \_\_\_\_\_

Party Chief D. Bartleson  
 Notes \_\_\_\_\_  
 Witness \_\_\_\_\_

