

OREGON CORNER RESTORATION FORM

Section 31 Township 3N Range 33E
 County Umatilla Date: May 5, 2001

Corner Designation: 3N33Z5

Closing corner to sections 31 and 32, T3N, R33E,
 W.M., Umatilla County, Oregon.

Condition Report Only
 Not found
 Remonumented
 Unrecorded
 Surveyed in
 Referenced out

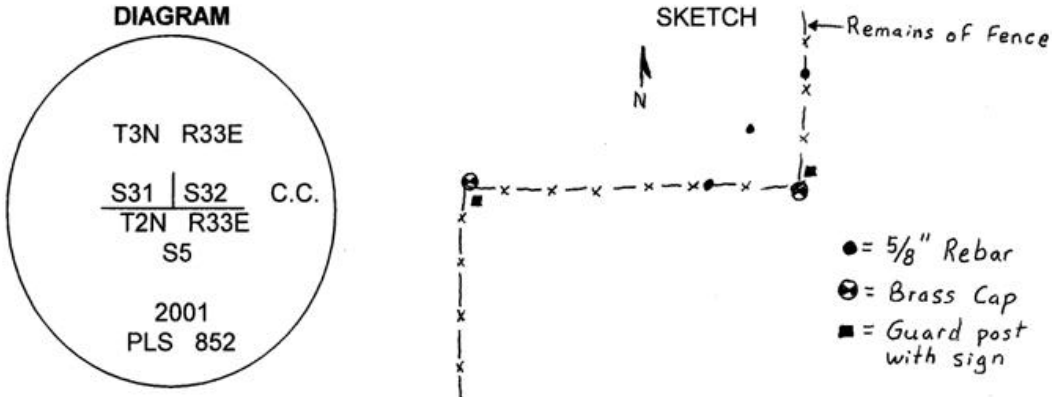
Previous Renewals / Surveys, etc.

Corner originally set by David P. Thompson under contract #106 dated August 16, 1864. His record reads: Set post for corner to secs. 5, 6, 31, & 32 in a mound of earth with charred stake pits, trench and c. as per instructions. Zenas Moody set a post in a mound of earth for this corner in 1871 which was later superceded by Currin and Noland under special contract dated May 4, 1887. Their record reads: Set post, 4 ft. long, 4 ins. square, 24 ins. in the ground for closing cor. to Secs. 31 and 32, marked CC., T3NR33E on N. S32 on E., and S31 on W. faces, with 5 notches on E. and 1 notch on W. edges. Dug pits 18x18x12 ins. NE. and W. of post, 5 1/2 ft. dist., raised a mound of earth 2 ft. high, 4 1/2 ft. base around it.

Lincoln Wilkes found a basalt stone 6x5 ins. at the corner of fences north and west and set a brass cap on a 36" iron post 1 link east of the corner for a closing corner witness corner.

Monument and Accessories found: (condition and source)

The position of the fence corner with fences North and West was still able to be determined and was within 1 foot of the Wilkes distance from the corner to sections 5 and 6 to the west.



MONUMENT (S) AND ACCESSORIES SET (Procedures and Description)

Set a 2 1/2" brass cap on a 1 1/4" x 30 galvanized iron pipe stamped as shown in the diagram above at the position indicated by the old fence corner. Set a wooden post with a county monument sign attached along side.

For references, I set three, 5/8" by 24" rebars with 1 1/8" red plastic caps stamped ORLS 852, WAL5 13922, and as described below:

- an iron rebar bears N4°07'56"E, 24.26 feet 18" below the surface;
- an iron rebar bears N47°58'29"W, 14.34 feet;
- an iron rebar bears S81°12'12"W, 29.98 feet;

The brass cap set by Lincoln Wilkes as a witness corner for the corner to sections 5 and 6 bears S88°09'32"W, 203.44 feet;

The monument and references were tied using a LIECA system 300 RTK GPS.

Location and comments

Compass Declination

Surveyors Seal

RECEIVED BY:
 Umatilla County Surveyor
 Date: 6-01
 Rec'd By: KF
 No. 01-81-C

Firm / Agency
 Haddock Surveying
 Address
 P.O. Box 1574
 Pendleton, Or. 97801
 Party Chief
 Stephen K, Haddock

REGISTERED
 PROFESSIONAL
 LAND SURVEYOR

David L. Haddock

OREGON
 JULY 12, 1988
 DAVID L. HADDOCK
 852