

**CERTIFIED RECORD OF LAND CORNER MONUMENTATION**

R19

**HISTORY OF ORIGINAL CORNER ESTABLISHMENT:**

The corner was originally surveyed by Daniel Chaplin under contract No. 107 dated Sept. 21, 1864, approved Jan. 24, 1865. His notes state: Set post for 1/4 section corner in mound of earth with charred stake, pits and etc. as per instructions.

The corner was resurveyed by Zenas Moody under contract No. 164 dated Oct. 4, 1871. His notes state: Set post and made Earth mound for 1/4 S. cor.

The corner was resurveyed again by James Currin and James Noland under Special Joint Contract dated May 4, 1887, approved June 14, 1890. Their notes state: Set basalt stone 9x8x7 ins. 6 ins. in the ground for 1/4 Sec. Cor., marked 1/4 on N. face, dug pits 18x18x12 ins. E. and W. of stone 5 1/2 ft. dist., raised mound of earth 1 1/2 ft. high, 8 1/2 ft. base over it.

Robert English set a 2 3/8 inch diameter brass cap to reestablish the corner in April 2012 while performing a survey for Umatilla County that was later filed as Survey No. 12-094-C. This corner position fell 15 feet east of the Helix Highway (OR 335) in a cultivated field.

Gary Roberts was performing a survey (later filed as 12-063-C) for the Umatilla County Road Department during the same time as English's survey. Roberts found evidence that indicated that the center of the highway was the best fit for the east-west component of the corner position. After discussion, the two surveyors agreed on the corner position and that the brass cap set by English would become a reference monument and accessory to the corner. Roberts filed a monumentation record after setting the amended corner, his notes state: Set a mag nail with brass washer marked "LS2627" at the revised corner location and stamped the brass cap with an arrow pointing to the corner and add the letters "RM" and the distance "25.24".

Robert English then filed a final monumentation record at the completion of his survey, his notes state:

Monuments and Accessories Found: A PK Nail w/ brass washer, stamped LS2627, in the center line of the Helix Hwy.

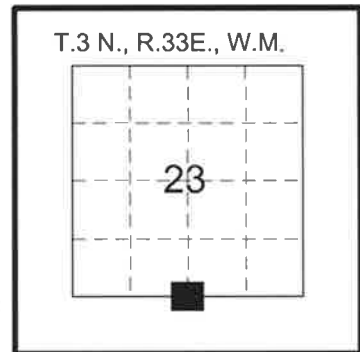
Monuments Set: A 1 1/8" x 30" galvanized iron pipe with 2 1/2" brass cap (witness corner), stamped as shown above, 1.6' below the surface, lies N 80° 48' 08" E, 25.24'.

References Set: A 5/8" x 30" iron rebar w/RPC \*43406 lies N 17° 11' 01" W, 68.95', at a sign post.

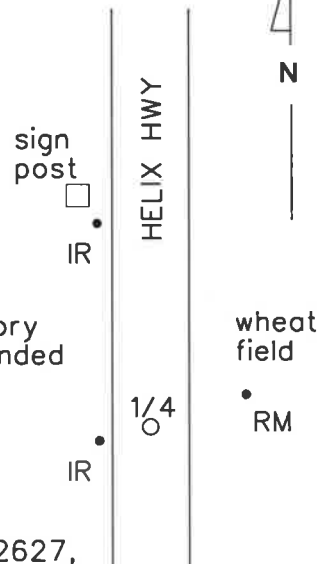
A silver magnet lies N 61° 55' E, 51.65', 1.6' deep.

A pink magnet lies S 70° E, 46.23', 1.8' deep.

A 5/8" x 30" iron rebar w/RPC \*43406 lies S 71° 19' 36" W, 22.56', at a steel fence post.



**SKETCH**



**DESCRIPTION OF CORNER EVIDENCE FOUND:**

Found a mag nail in two washers, marks illegible, in the center of the Helix highway, from which:

A 2 3/8 ins. diam. brass cap, down 1.6 ft. in a field, bears at record (N80° 48' 08" E, 25.24 ft.) marked as shown in diagram above at right:

A 1 1/2 ins. diam. red plastic cap marked ORPLS43406 WAPLS44338 bears at record (S71° 19' 36" W, 22.56 ft.).

A 5/8 ins. diam. iron rod with no cap lying 1 ft. SE'ly of sign post bears at record (N17° 11' 01" W, 68.95 ft.).

NOTE: I did not excavate to nor recover the magnet accessories.

**DESCRIPTION OF MONUMENT AND ACCESSORIES ESTABLISHED TO PERPETUATE THE ORIGINAL LOCATION OF THIS CORNER:**

At position of found mag nail:

Set a 3 1/4 ins. diam. alum. cap on a 5/8 ins. diam. by 30 ins. long iron rod (rebar), driven 22 inches in the ground and placed inside a 10 ins. diam. cast iron monument box, cap is 2 ins. below surface. Marked as shown:

*RECEIVED BY*

**OR STATE PLANE NORTH ZONE NAD83(2011)(EPOCH:2010.0000) INT. FEE** Umatilla County Surveyor

Date: 8/4/17

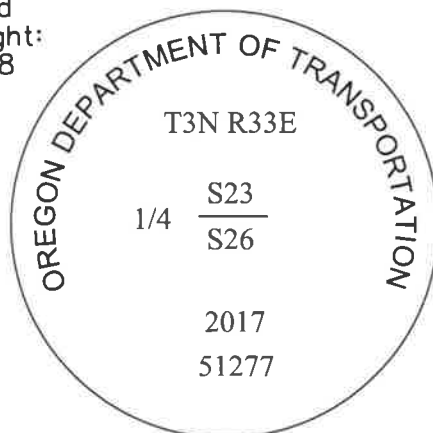
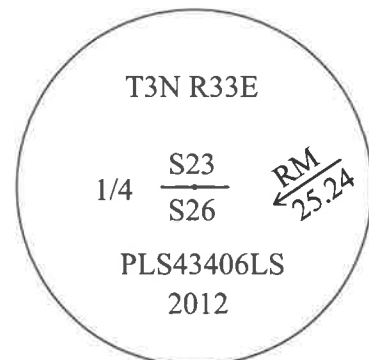
Rec'd By: CT

No.: 17-097-R

N 753148.03  
E 8673937.20

Witnesses:  
Chuck Longfield  
Peter Elder

I hereby certify that the above corner position was perpetuated as hereon described on July 11, 2017.



OREGON DEPARTMENT OF TRANSPORTATION



Section	HWY11 - HELIX		RENEWS: 12/31/2017	
Highway	OR 335 HAVANA-HELIX HWY			
County	Umatilla	Scale	NTS	
Purpose	Corner Restoration	Date	July 13, 2017	
File				