

N-25

OREGON CORNER RESTORATION FORM

Section 24 Township 3N Range 32E

County Umatilla Date 12-28-94

N-25

CORNER DESIGNATION

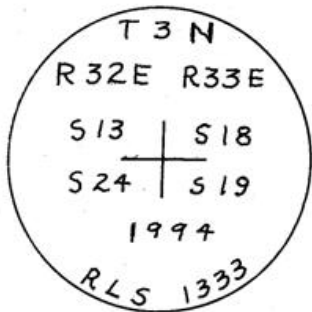
- Condition Report Only
- Not Found
- Renewed
- Unrecorded
- Surveyed In
- Referenced Out

Previous Renewals/Surveys, etc. None known

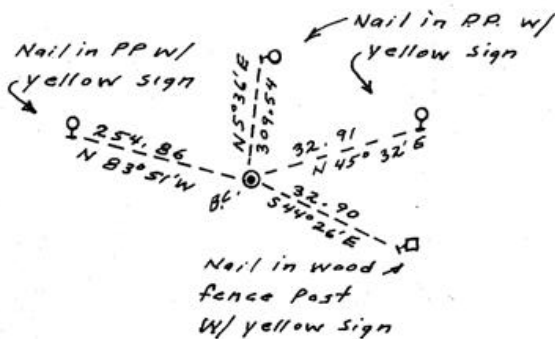
Monument(s) & Accessories Found: (Condition and Source)

None found. The only remaining evidence is the centerlines of the existing intersection of the county roads going in the four directions.

Monument Detail



Sketch



Monument Set (Procedures and Description)

Set 1" x 30" G.I.P. w/flare and 2.5" brass cap 6" below paved surface of road.

New Accessories

- Nail in power pole w/yellow sign bears N83°51'W 254.86 ft.
- Nail in power pole w/yellow sign bears N5°36'E 309.54 ft.
- Nail in power pole w/yellow sign bears N45°32'E 32.91 ft.
- Nail in wood fence post w/yellow sign bears S44°26'E 32.90 ft.

Location & Comments

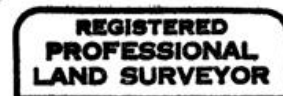
Corner located in intersection of county roads

Compass Declination _____
Firm/Agency Don Staebler
Engineer-Surveyor

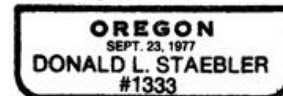
RECEIVED BY _____
Umatilla County Surveyor
Date 12-94
Rec'd by RZ
No. 94-173-A

Address 1532 S. W. 41
Pendleton, OR 97801
Party Chief Don Staebler
Notes _____
Witness _____

Surveyor's Seal



Donald L. Staebler



Renews 6-30-96