

OREGON CORNER RESTORATION FORM

COUNTY: Umatilla DATE: 4/13/15

CORNER DESIGNATION: The West One-Quarter Corner of Section 16, Township 3 North, Range 31 East, L-9.

PREVIOUS RENEWALS/SURVEYS ETC.: Corner originally established by D.S. Payne, under Contract No. 100, dated 8/1/1861, notes state: Set charred stake with mound trench and pits as per instrs. for 1/4 sec corner. The project intersection of Peebler Road (West) with a old field line and fence South was held as the corner point in Survey No. 06-462-C.

MONUMENT AND ACCESSORIES FOUND: None.

MONUMENT MARKING DETAIL:

T3N R31E
1/4
S17|S16
2015
PLS 54657

MONUMENT SET:

Held the corner position measured on Survey No. 06-042-C as best remaining evidence of the original corner. Note: The fence South observed on Survey No. 06-042-C has been removed and the field line South is different than in 2006. At the re-established corner point, set a 2 3/8" brass cap on a 1 1/4" x 30" galvanized iron pipe, with top 20" below ground level, stamped as shown in "Monument Marking Detail".

From which:

- A silver deep-1 magnet buried 20" in the ground bears North 56° East, 38.7 feet.
- A pink deep-1 magnet buried 20" in the ground bears South 56° East, 37.2 feet.
- A blue deep-1 magnet buried 20" in the ground, bears South 16° West, 21.2 feet.
- An orange deep-1 magnet buried 20" in the ground, bears North 16° West, 35.8 feet.

Buried bearing object tags with magnets. Set steel fence post with witness sign 1.0 foot North of monument.

LOCATION AND COMMENTS: Located 15 feet +/- West of existing North/South field line at Easterly projection of Peebler Road.

OREGON STATE PLANE COORDINATE, North Zone, NAD 83(91), International Feet:

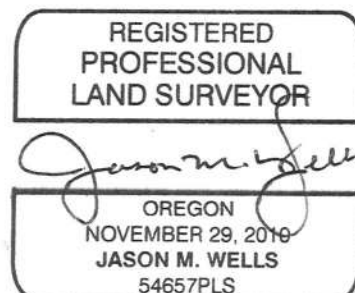
N = 759988.66
E = 8596867.82

FIRM: Wells Surveying
P.O. Box 1696
Pendleton, OR 97801

COMPASS DECLINATION: 18° East Surveyor's Seal

Witnesses: Jason Wells, PLS
Dean Roy

/3N31L9



RENEWS: 6-30-16

15-052-c