

OREGON CORNER RESTORATION FORM

Section 25,26,35,36

Township 3N

Range 29E

County Umatilla

Date: 1/20/09

Corner Designation: 3N29V21

Section corner common to T3NR29E sections 25,26,25, and 36.

- Condition Report Only
- Not Found
- Remonumented
- Unrecorded
- Surveyed In
- Referenced Out

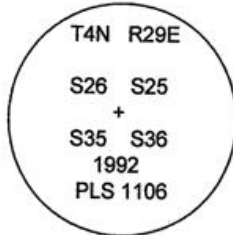
Previous Renewals / Surveys, etc.

Originally Surveyed by Gates in 1859. He set a post in a mound of earth.
In 1992 Wells set a 2 1/2" B.C. in an accepted four way fence intersection.
In 2002 Haddock found a 2 1/2" B.C.

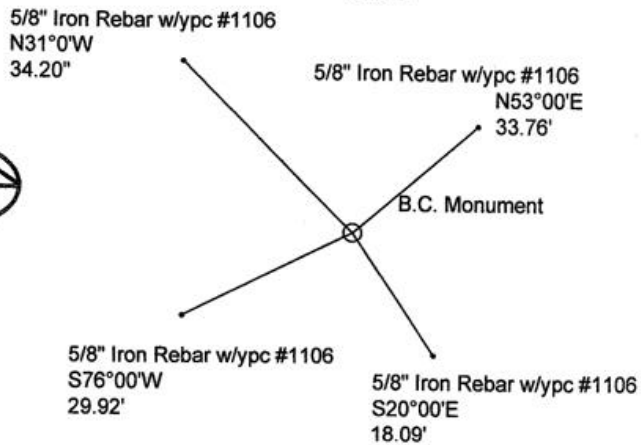
Monuments and Accessories Found: (Condition and Source)

- A 2 1/2" B.C.
- A 5/8" iron rebar w/ypc lies N 31° 00' W, 34.20.'
- A 5/8" iron rebar w/ypc lies N 53° 00' E, 33.76.'
- A 5/8" iron rebar w/ypc lies S 76° 00' W, 29.92'.
- A 5/8" iron rebar w/ypc lies S 20° 00' E, 18.09'.

Diagram



Sketch



NAD 83/91
OREGON STATE PLANE NORTH
INTERNATIONAL FEET

N745883.98
E8548958.87

LAT - 45° 42' 16.38122" N LON - 119° 08' 32.10072" W

Monument (s) Set (Procedures and Description)

None.

References Set:

None.

Location and Comments

From Echo school so Southeast on Reith Rd. approx. 3.7 miles. The corner is located on the hill North of the road across the irrigation canal.

Compass Declination

17° E

Surveyors Seal

REGISTERED
PROFESSIONAL
LAND SURVEYOR

Robert D. English
OREGON
JANUARY 11, 2005
ROBERT DOUGLAS ENGLISH
43406LS

RECEIVED BY:

Date: 1-11
Rec'd By: KK
No. 11-19-R

Firm / Agency

Survey One, LLC.
P.O. Box 382
Pendleton, OR 97801
(541) 276-2055

RENEWAL DATE: 12/31/09