

OREGON CORNER RESTORATION FORM

Section 29 Township 3N
County Umatilla Date: 08/31/09

Range 29E

Corner Designation: 3N29R7

1/4 Corner common to sections 20 and 29, T3NR29E.

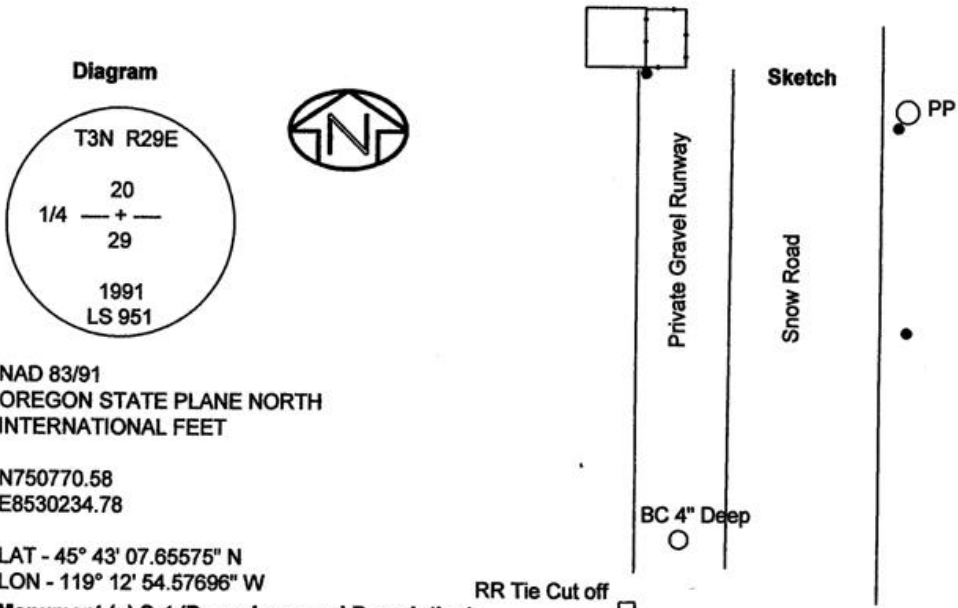
- Condition Report Only
- Not Found
- Remonumented
- Unrecorded
- Surveyed In
- Referenced Out

Previous Renewals / Surveys, etc.

Originally Surveyed by N.H. Gates in 1859. He set a post in a mound of earth.
Staebler set a 1 x 30" iron pipe w/ 2 1/2" B.C. on survey I-158-B.
Edwards set a 1 x 30" iron pipe w 2 3/8" B.C. by retracing Staebler's Survey.

Monuments and Accessories Found: (Condition and Source)

A 2.5" B.C.
A cut off RR Tie with bearing object sign lies S 36°00' W, 50.40'.



NAD 83/91
OREGON STATE PLANE NORTH
INTERNATIONAL FEET

N750770.58
E8530234.78

LAT - 45° 43' 07.65575" N
LON - 119° 12' 54.57696" W

Monument (s) Set (Procedures and Description)
None.

References Set:

- A 3/8" x 30" Iron rebar w/ypc #43406 lies N 15°15' E, 162.45'.
- A 3/8" x 30" Iron rebar w/ypc #43406 lies N 9°30' E, 250.84'.
- A 3/8" x 30" Iron rebar w/ypc #43406 lies N 6°30' W, 219.10'.

Location and Comments

The corner is 1.2 miles south of the intersection of Hwy 320 and Echo Meadows Road.

Compass Declination
17° E

Surveyors Seal

REGISTERED
PROFESSIONAL
LAND SURVEYOR

Robert D. English

OREGON
JANUARY 11, 2005
ROBERT DOUGLAS ENGLISH
43406LS

RENEWAL DATE: 12/31/09

RECEIVED BY:

Date: 10-09
Rec'd By: KE
No. 09-146-R

Firm / Agency

Survey One, LLC.
P.O. Box 382
Pendleton, OR 97801
(541) 276-2055