

**OREGON CORNER RESTORATION FORM**

Section 5,6 Township 3N  
County Umatilla Date: 08/12/10

Range 29E

Corner Designation: 3N29C5

Corner common to sections 5,6 T3NR29E.

- Condition Report Only
- Not Found
- Remonumented
- Unrecorded
- Surveyed In
- Referenced Out

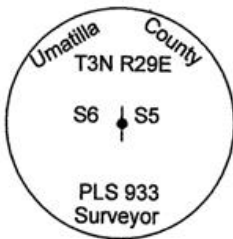
**Previous Renewals / Surveys, etc.**

Originally Surveyed by Gates. He set a post in a mound of earth in 1859. Krumbein set a 2" brass cap in a steel pipe.

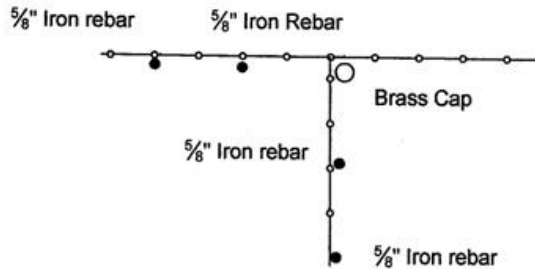
**Monuments and Accessories Found: (Condition and Source)**

2" Brass cap, in good condition, approximately 10" out of ground.

Diagram



Sketch



NAD 83/91  
OREGON STATE PLANE NORTH  
INTERNATIONAL FEET

N769266.71  
E8527306.11

LAT - 45° 46' 10.68964" N  
LON - 119° 13' 31.97928" W

**Monument (s) Set (Procedures and Description)**

None.

**References Set:**

- A 5/8" x 30" Iron rebar w/rpc #43406 lies N 87°57' W, 38.67'.
- A 5/8" x 30" Iron rebar w/rpc #43406 lies N 78° W, 13.17'.
- A 5/8" x 30" Iron rebar w/rpc #43406 lies S 0°50' W, 23.32'.
- A 5/8" x 30" Iron rebar w/rpc #43406 lies S 0°20' W, 51.91'.

**Location and Comments**

Corner is at a fence intersection  
N. of a farm road that parallels I84.  
Approx 1/2 mile East of Echo Meadows Rd.

**Compass Declination**  
17° E

**Surveyors Seal**

REGISTERED  
PROFESSIONAL  
LAND SURVEYOR

*Robert D. English*  
OREGON  
JANUARY 11, 2005  
ROBERT DOUGLAS ENGLISH  
434.06LS

**RECEIVED BY:**

Date: 1-11  
Rec'd By: KK  
No. 11-09-R

**Firm / Agency**

Survey One, LLC.  
P.O. Box 382  
Pendleton, OR 97801  
(541) 276-2055

RENEWAL DATE: 12/31/11