

OREGON CORNER RESTORATION FORM

Section 23 Township 3N Range 28E
 County Umatilla Date: 06-18-02

Corner Designation: 3N28R19

Condition Report Only
 Not Found
 Remonumented
 Unrecorded
 Surveyed In
 Referenced Out

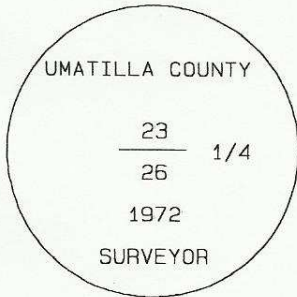
Previous Renewals / Surveys, etc.

This corner was recorded as set by survey H-107-B.

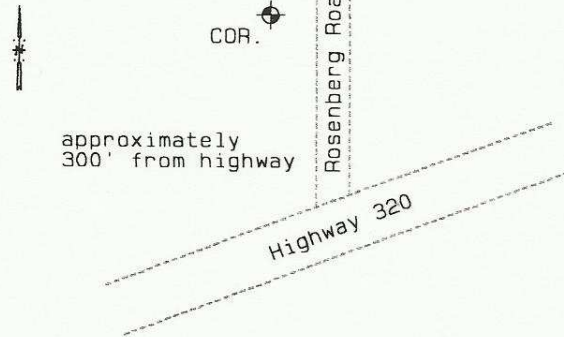
Monument and Accessories Found: (condition and source)

The corner is standing about 24" above the surrounding ground. It appears the ground has been excavated leaving the corner standing in a small mound of dirt where it was originally. The corner is in danger of falling over and may have already been moved from its original position.

DIAGRAM



SKETCH



MONUMENT (S) AND ACCESSORIES SET (Procedures and Description)

None.

REFERENCES SET:

None.

Made GPS tie to TRI Station Stanfield East Base.	Oregon State Plane Coord. - North Zone
Latitude 45°43'07.20518"N	Northing 750470.80
Longitude 119°16'47.01117"W	Easting 8513763.70
NAD 83(1991)	Ortho Height 678.27
	Ellipsoidal Height 608.76

Location and Comments Compass Declination Surveyors Seal
 20°E

From the junction of Highway 320 and Rosenberg Road, go north 300'. The corner is clearly visible on the west side of the road with a fence post and marker sign.

REGISTERED
 PROFESSIONAL
 LAND SURVEYOR

RECEIVED BY:

Firm / Agency

David L. Haddock

Date: 7-02
 Rec'd By: KK
 No. 02-187-g

Haddock Surveying
 P. O. Box 1574
 Pendleton, OR 97801
 (541) 276-2174

OREGON
 JULY 12, 1968
 DAVID L. HADDOCK
 852

RENEWS 6-30-03