

OREGON CORNER RESTORATION FORM

Section 18 Township 3N Range 28E
 County Umatilla Date: 06-22-02

Corner Designation: 3N28L5

Condition Report Only
 Not Found
 Remonumented
 Unrecorded
 Surveyed In
 Referenced Out

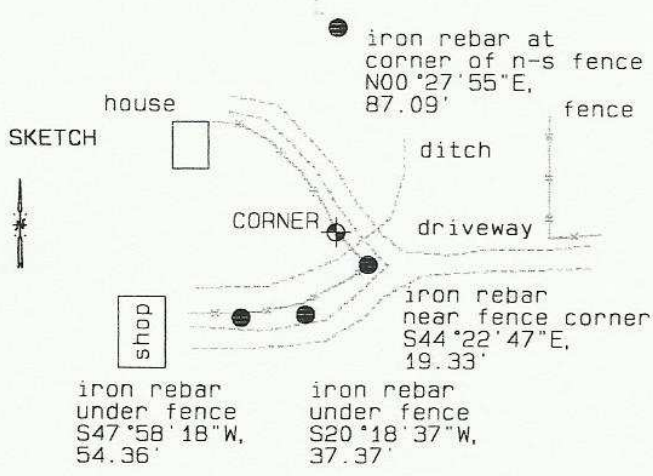
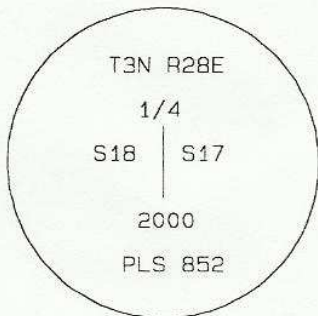
Previous Renewals / Surveys, etc.

Oregon Corner Restoration Form by David Haddock dated 3-2000.

Monument and Accessories Found: (condition and source)

Found the record monument as described. Also found the references farthest north and west.

DIAGRAM



MONUMENT (S) AND ACCESSORIES SET (Procedures and Description)

None.

REFERENCES SET:

None.

Made GPS tie to TRI Station Stanfield East Base.
 Latitude 45°44'27.21990"N
 Longitude 119°21'07.80188"W
 NAD 83(1991)

Oregon State Plane Coord. - North Zone
 Northing 758303.23
 Easting 8495147.85
 Ortho Height 710.76
 Ellipsoidal Height 641.00

Location and Comments

Compass Declination
 20 °E

Surveyors Seal

From the junction of Highways 207 and 320, go north 2.1 miles. Turn left on the gravel road to a farm house. The corner is located in the irrigation ditch area just west of a small bridge leading to the house.

REGISTERED
PROFESSIONAL
LAND SURVEYOR

RECEIVED BY:

Firm / Agency

David L. Haddock

Date: 7-02
 Rec'd By: RE
 No. 02-185-g

Haddock Surveying
 P. O. Box 1574
 Pendleton, OR 97801
 (541) 276-2174

OREGON
JULY 12, 1968
DAVID L. HADDOCK
852

RENEWS 6-30-03