

**OREGON CORNER RESTORATION FORM**

Section 17 Township 3N Range 28E  
 County Umatilla Date: January 31, 2000

Corner Designation: 3N28J7

1/4 corner to sections 8 and 17, T3N, R28E W.M.

Condition Report Only  
 Not found  
 Remonumented  
 Unrecorded  
 Surveyed in  
 Referenced out

Previous Renewals / Surveys, etc.

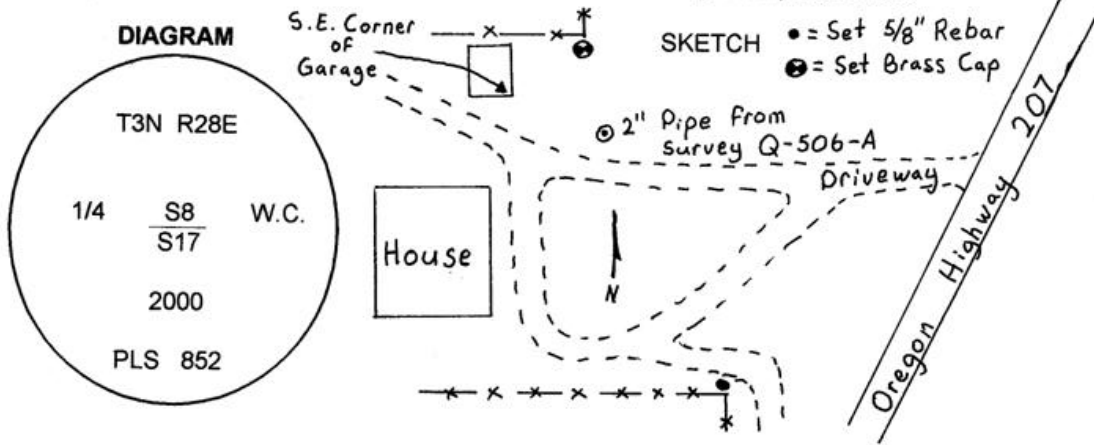
Corner originally set by N. Gates under contract No. 84 Dated January 31, 1860.

His record reads: Set post for 1/4 section corner.

G. M. Newbill set a pipe at proportional location in 1954 under survey Q-506-A.

Monument and Accessories found: ( condition and source )

Found a 2" i.d. iron pipe in place 3" below the surface near the edge of a plowed field.



MONUMENT (S) AND ACCESSORIES SET (Procedures and Description)  
 I left the iron pipe set by survey Q-506-A in place.

For references I set a 1 1/4" x 30" Galvanized Iron Pipe with a 2 1/2" brass cap for a witness corner stamped as shown in the diagram above at a fence corner. The witness corner bears N7°35'53"W, 135.74 feet from the quarter corner.

I set two 5/8" by 24" rebar with 1.25" red plastic caps stamped ORLS 852 and WALS 13922 as described below:

- an iron rebar bears N43°37'31"W, 179.81 feet in the existing fence;
- an iron rebar bears S35°52'58"E, 287.85 feet at the existing fence corner;
- The southeast corner of a concrete foundation of a garage bears N70°38'39"W, 134.52 feet.

These references were set and tied used a LIECA system 300 RTK GPS

Location and comments

Compass Declination

Surveyors Seal

RECEIVED BY:  
 Umatilla County Surveyor  
 Date: 3-2000  
 Rec'd By: KR  
 No. 00-33-B

Firm / Agency  
 Haddock Surveying  
 Address  
 P.O. Box 1574  
 Pendleton, Or. 97801  
 Party Chief  
 Stephen K, Haddock

REGISTERED  
 PROFESSIONAL  
 LAND SURVEYOR

*David L. Haddock*

OREGON  
 JULY 12, 1968  
 DAVID L. HADDOCK  
 852

*Renews 6/30/01*