

OREGON CORNER RESTORATION FORM

Section 10 Township 3N Range 28E
 County Umatilla Date: 06-19-02

Corner Designation: 3N28E13

x	Condition Report Only
	Not Found
	Remonumented
	Unrecorded
x	Surveyed In
	Referenced Out

Previous Renewals / Surveys, etc.

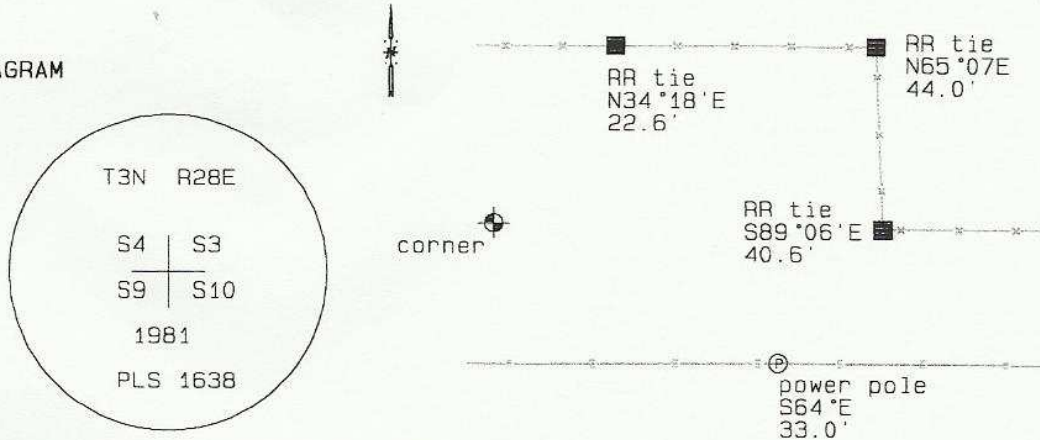
Survey S-14-B records setting a brass capped monument here.
 Survey 84-56-B records finding that monument.

Monument and Accessories Found: (condition and source)

Found the record monument near a fence intersection.

SKETCH

DIAGRAM



MONUMENT (S) AND ACCESSORIES SET (Procedures and Description)

None.

REFERENCES SET:

None.

Made GPS tie to TRI Station Stanfield East Base.	Oregon State Plane Coord. - North Zone
Latitude 45°45'45.43213" N	Northing 766375.94
Longitude 119°18'39.91955" W	Easting 8505518.08
NAD 83 (1991)	Ortho Height 654.24
	Ellipsoidal Height 584.43

Location and Comments

Compass Declination
20°E

Surveyors Seal

From the junction of I84 and Highway 207, go south 1.6 miles. Take a field road east 1.3 miles. the corner is located off the fence line of a staggered east west fence. A BO tag on a power pole witnesses the corner.

REGISTERED
 PROFESSIONAL
 LAND SURVEYOR

RECEIVED BY:

Firm / Agency

David L. Haddock

Date: 7-02
 Rec'd By: KK
 No. 02-185-9

Haddock Surveying
 P. O. Box 1574
 Pendleton, OR 97801
 (541) 276-2174

OREGON
 JULY 12, 1968
 DAVID L. HADDOCK
 852