

**OREGON CORNER RESTORATION FORM**

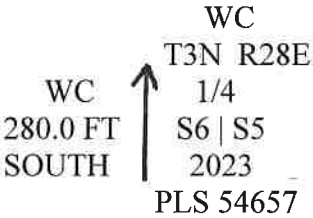
COUNTY: Umatilla. DATE: 04/04/23.

CORNER DESIGNATION: C-5, the East Quarter Corner of Section 6, Township 3 North, Range 28 East, W.M.

PREVIOUS RENEWALS/SURVEYS ETC: Corner was originally established by N.H. Gates under Contract No. 84, dated July 22, 1859. Gates set a post in earth mound. Survey Number 198, surveyed through the corner area but does not report a monument set or found. Survey No. Q-503-B reports finding a "Stake" in fence line for the corner. Survey No. S-14-B computed the corner point with reference to Survey No. Q-503-B but did not set a corner monument.

MONUMENT AND ACCESSORIES FOUND: None. Per Survey No. Q-503-B, I computed the corner point by holding the record angle of 89°24' to the right from the North 1/4 corner of Section 5 and measuring Southerly 2698.8', (2698.59' grid distance), from the Northwest corner of Section 5. There is no remaining evidence of the corner at the computed corner point, which falls at the edge of an active silage pit. The corner area being subject to disturbance, I set a witness corner monument, South 01°37'19" E, 280.00', (grid distance) from the true corner point, on line between the computed position and the Southwest corner of Section 5.

**MONUMENT MARKING DETAIL:**



**WITNESS CORNER MONUMENT SET:**

At a point about 50' South +/- of the South edge of silage pit, I set a 2 1/2" brass cap on 1 1/4"X30" galvanized iron pipe 30" in the ground. The brass cap is marked as shown in the Monument Marking Detail. Set a steel fence post 1' North of the witness corner monument and attached Witness post sign.

**New accessories to the witness corner monument:**

- A 5/8"X24" rebar with blue plastic cap marked "Wells Surveying 54657PLS" bears N 49°50'42" E, 81.39'. Wired bearing object sign to the rebar..
- A 5/8"X24" rebar with blue plastic cap marked "Wells Surveying 54657PLS" bears S 64°36'29" E, 52.22' near wood fence corner post. Nailed bearing object sign to the wood fence post.
- A 5/8"X24" rebar with blue plastic cap marked "Wells Surveying 54657PLS" bears S 47°36'08" W, 44.07'. Wired bearing object sign to the rebar.
- A 5/8"X24" rebar with blue plastic cap marked "Wells Surveying 54657PLS" bears N 57°40'40" W, 76.06'. Wired bearing object sign to the rebar.

Courses to corner accessories are State Plane Grid bearings and distances.

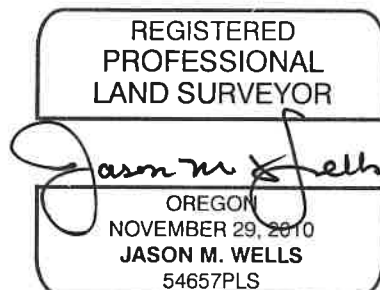
LOCATION AND COMMENTS: Witness corner monument is approximately 50' South of the South edge of the silage pit.

**OREGON STATE PLANE COORDINATE, North Zone NAD 83(91), International Feet Units:**

N: 768890.24  
E: 8494880.48

FIRM: Wells Surveying  
P.O. Box 1696  
Pendleton, OR 97801

Surveyor's Seal



\3N28C-5

RENEWS: 6/30/24

24-004-C