

OREGON CORNER RESTORATION FORM

Section 34 Township 3N Range 27E
 County Umatilla Date 09-10-02

Corner Designation: 3N27Z13
 _____ x _____ Condition Report Only
 _____ Not Found
 _____ Remonumented
 _____ Unrecorded
 _____ Surveyed In
 _____ Referenced Out

Previous Renewals / Surveys, etc.

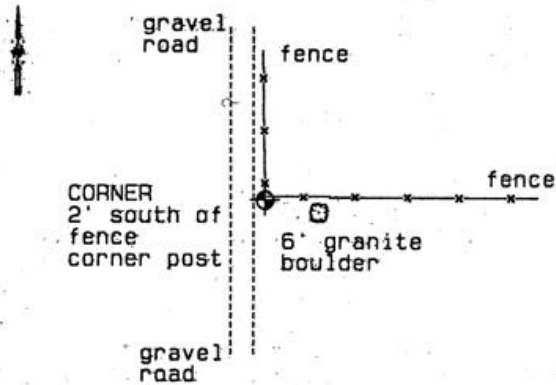
Corner set by Gould of GLO in 1940.

Monument and Accessories Found (condition and source)

Found the record monument in good condition flush with the surface, stamped as shown in the diagram below.

SKETCH

DIAGRAM



MONUMENT (S) AND ACCESSORIES SET (Procedures and Description)

None.

REFERENCES SET

None.

Made GPS tie to TRI Station Stanfield East Base
 Latitude 45 41 24.52105 N
 Longitude 119 26 04.36659 W
 NAD 83 (1991)

Oregon State Plane Coord. - North Zone
 Northing 739511.92
 Easting 8474361.31
 Ortho Height 1014.73
 Ellipsoidal Height 945.23

Location and Comments **Compass Declination 20°E**

From the junction of Highways 320 and 207, follow Madison Farm Road west 1.1 miles. Then follow the south fork of Madison Farm Road south west 0.9 mile to the a fence corner. From this fence corner, go west 1 mile, and then along a fence south 1 mile to a fence corner. The monument is 2' south of this fence corner.

Surveyors Seal

REGISTERED
 PROFESSIONAL
 LAND SURVEYOR

David L. Haddock

OREGON
 JULY 12, 1968
 DAVID L. HADDOCK
 852

RECEIVED BY:

Date: 12-02
 Rec'd By: BK
 No: 02-282-10

Firm / Agency

Haddock Surveying
 P. O. Box 1574
 Pendleton, OR 97801
 (541) 276-2174

RENEWS 6-30-03