

OREGON CORNER RESTORATION FORM

Section 26 Township 3N Range 27E
 County Umatilla Date 08-10-02
 Corner Designation 3N27W47

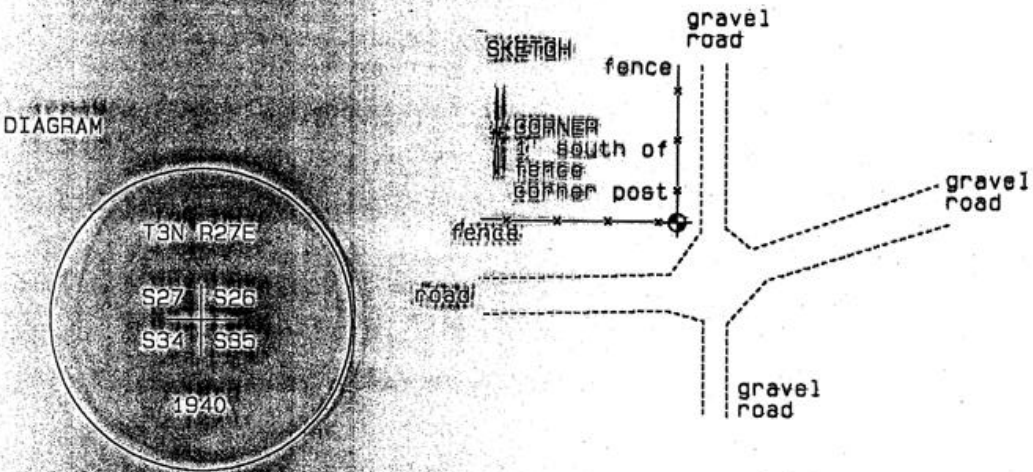
Condition Report Only
 Not Found
 Remonumented
 Unrecorded
 Surveyed In
 Referenced Out

Previous Renewals / Surveys, etc.

Corner set by Gould of GLO in 1940.
 Survey 82-115-AX reports finding this monument.

Monument and Accessories Found: (Condition and source)

Found the record monument in good condition flush with the surface, stamped as shown in the diagram below.



MONUMENT (S) AND ACCESSORIES SET (Procedures and Description)

None.

REFERENCES SET

None.

Made GPS tie to TRI Station
 Stanfield East Base
 Latitude 45° 42' 17.25476" N
 Longitude 119° 24' 49.93022" W
 NAD 83 (1994)

Oregon State Plane Coord. - North Zone
 Northing 744922.94
 Easting 8479572.84
 Ortho Height 983.92
 Ellipsoidal Height 914.34

Location and Comments Compass Orientation 20° E Surveyors Seal

From the junction of Highways 320 and 207, follow Madison Farm Road west 7.4 miles. Then follow the south fork of Madison Farm Road south west 0.9 mile to the corner at a fence corner.

RECEIVED BY:

Firm / Agency

Date: 12-20-02
 Rec'd By: [Signature]
 No.: 02-282-9

Haddock Surveying
 P.O. Box 1574
 Pendleton, OR 97801
 (541) 278-2174

REGISTERED
 PROFESSIONAL
 LAND SURVEYOR

David L. Haddock

OREGON
 JULY 12, 1968
 DAVID L. HADDOCK
 852

RENEWS 6-30-03