

OREGON CORNER RESTORATION FORM

Section 2 Township 3N Range 27E
 County Umatilla Date 06-28-02

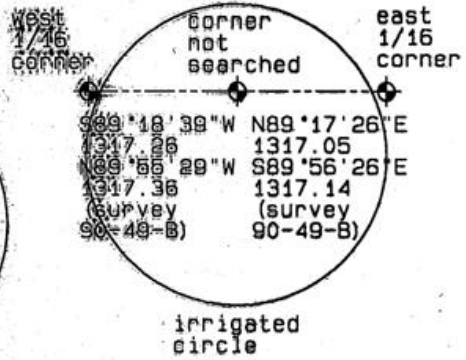
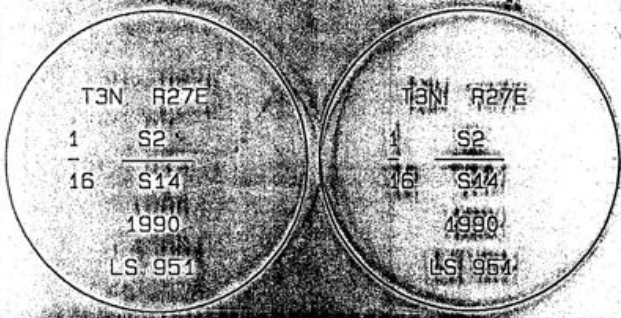
Corner Designation: 3N27E49
 Condition Report Only
 Not Found
 Remonumented
 Unrecorded
 Surveyed In
 Referenced Out

Previous Renewals / Surveys, etc.
 Survey 90-49-B records finding a brass capped monument set by Gould in 1940.

Monument and Accessories Found: (condition and source)
 Found brass capped monuments at the east and west one sixteenth corners between sections 2 and 16 as described in survey 90-49-B. Computed the coordinates for the one quarter as given below based on survey 90-49-B.

SKETCH

DIAGRAM



MONUMENT (S) AND ACCESSORIES SET (Approximate and Description)

None.

REFERENCES SET:

None.
 Made GPS tie to TBM Station Stanfield East Base
 Latitude: 45°45'46.53720"N
 Longitude: 119°24'13.08990"W
 NAD 83 (1991)
 Oregon State Plane Coord. - North Zone
 Northing 766153.82
 Easting 8481899.36
 Ortho Height
 Ellipsoidal Height

Location and Comments: From the junction of 154 and Westland Rd., 20'E go south on Col. Jordan Road 0.4 mi. Then take the Madison Farm road southerly for 0.8 mile, and then westerly 0.9 mile. Then go along the north edge of a canal 0.7 mile to the east 1/16 corner. Then continue along the north edge of the circle 0.7 mile to the west 1/16 corner.

Surveyors Seal

RECEIVED BY:

Firm / Agency

Date: 12-02
 Rec'd By: KK
 No: 02-292-10

Haddock Surveying
 P.O. Box 1574
 Pendleton, OR 97801
 (541) 278-2174

REGISTERED PROFESSIONAL LAND SURVEYOR

David L. Haddock

OREGON
 JULY 12, 1968
 DAVID L. HADDOCK
 852