

# OREGON CORNER RESTORATION FORM

SECTION 35 TOWNSHIP 4 NORTH RANGE 27 EAST Z-19  
 COUNTY : UMATILLA DATE 08-2002

CORNER DESIGNATION

S 1/4

- CONDITION REPORT ONLY
- NOT FOUND
- RENEWED
- UNCOVERED
- SURVEYED IN
- REFERENCED

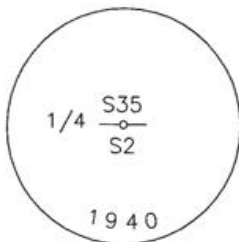
PREVIOUS RENEWALS / SURVEYS, ETC.

ORIGINALLY SURVEYED UNDER CONTRACT #91 IN 1860 BY HAFT. HE SET POST IN MOUND.  
 IN 1940 GOULD DID A DEPENDENT RESURVEY & SET 2 1/2" BRASS CAP ON IRON PIPE.

MONUMENTS AND ACCESSORIES FOUND: CONDITION AND SOURCE

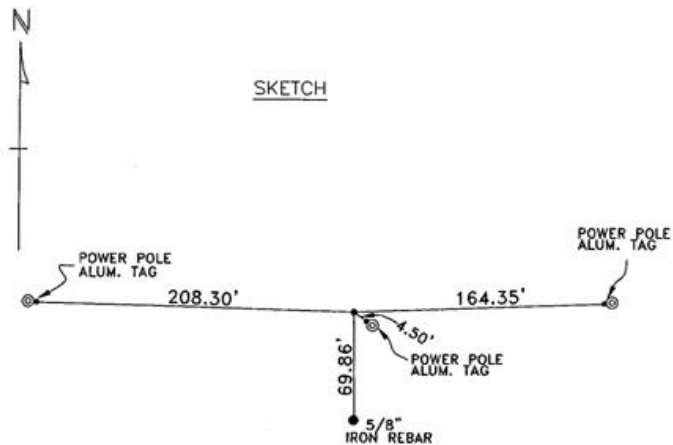
FOUND 2 1/2" BRASS CAP STAMPED AS BELOW.

MONUMENT DETAIL



NAD 83/91  
 OREGON STATE PLANE  
 INTERNATIONAL FEET  
 771485.0508  
 8481811.9385

SKETCH



MONUMENT SET ( PROCEDURES AND DESCRIPTION )

NEW ACCESSORIES FROM WHICH

AN ALUMINUM TAG STAMPED #951 ON A POWER POLE BEARS N 88°29'35" W 208.30 FEET.  
 A 5/8"X30" IRON REBAR WITH PLASTIC CAP #951 BEARS S 0°31'02" E 69.86 FEET.  
 AN ALUMINUM TAG STAMPED #951 ON A POWER POLE BEARS S 55°07'37" E 4.50 FEET.  
 AN ALUMINUM TAG STAMPED #951 ON A POWER POLE BEARS N 87°59'27" E 164.35 FEET.

LOCATION AND COMMENTS

1 1/2 MILE EAST OF COUNTY  
 LINE RD. & 1/2 MILE NORTH  
 OF COL. JORDAN RD.

COMPASS DEC.

FIRM/AGENCY  
 EDWARDS SURVEYING  
 P.O. BOX 763  
 HERMISTON, OREGON 97838

PARTY CHIEF  
 CURTIS FAVOREL

NOTES

WITNESS  
 RICK SMITH

SURVEYOR'S SEAL

REGISTERED  
 PROFESSIONAL  
 LAND SURVEYOR

*G. Dennis Edwards*

OREGON  
 JULY 16, 1971  
 G. DENNIS EDWARDS  
 9 5 1  
 RENEWS 12/31/2003

03-50-9