

OREGON CORNER RESTORATION FORM

SECTION 34 TOWNSHIP 4 NORTH RANGE 27 EAST Z-15

COUNTY : UMATILLA DATE 08-2002

CORNER DESIGNATION

S 1/4

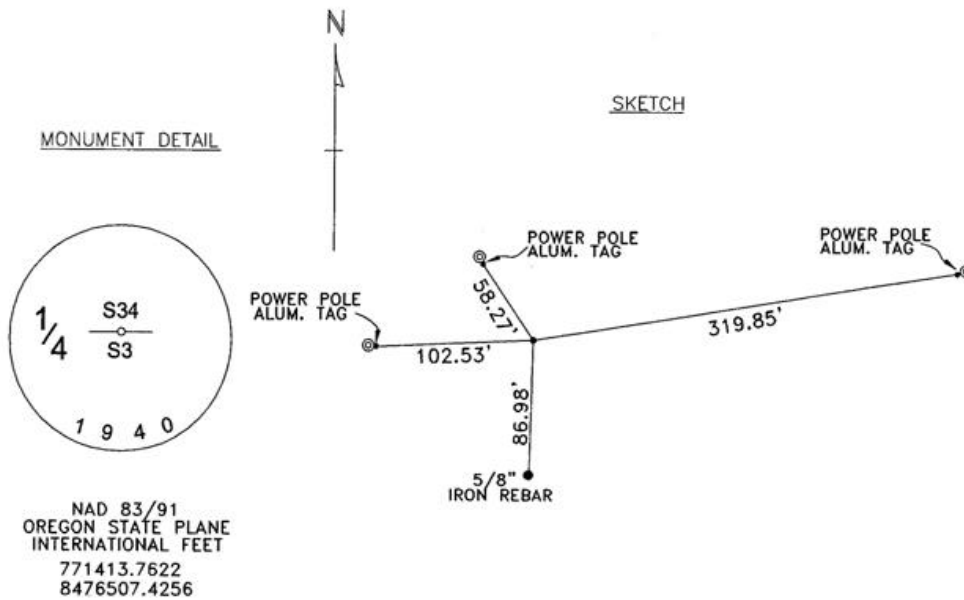
- CONDITION REPORT ONLY
- NOT FOUND
- RENEWED
- UNCOVERED
- SURVEYED IN
- REFERENCED

PREVIOUS RENEWALS / SURVEYS, ETC.

ORIGINALLY SURVEYED UNDER CONTRACT #91 IN 1860 BY HAFT. HE SET POST IN MOUND.
IN 1940 GOULD DID A DEPENDENT RESURVEY & SET 2 1/2" BRASS CAP ON IRON PIPE.

MONUMENTS AND ACCESSORIES FOUND: CONDITION AND SOURCE

FOUND 2 1/2" BRASS CAP STAMPED AS BELOW.



MONUMENT SET (PROCEDURES AND DESCRIPTION)

NA

NEW ACCESSORIES FROM WHICH

AN ALUMINUM TAG STAMPED #951 ON A POWER POLE BEARS S 87°31'00" W 102.53 FEET.
AN ALUMINUM TAG STAMPED #951 ON A POWER POLE BEARS N 34°21'41" W 58.27 FEET.
AN ALUMINUM TAG STAMPED #951 ON A POWER POLE BEARS N 81°09'54" E 319.85 FEET.
A 5/8"X30" IRON REBAR WITH PLASTIC CAP #951 BEARS S 1°24'57" W 86.98 FEET.

LOCATION AND COMMENTS

1/2 MILE EAST OF COUNTY
LINE ROAD & 1/2 MILE
NORTH OF COL. JORDAN RD.

COMPASS DEC.

FIRM/AGENCY
EDWARDS SURVEYING
P.O. BOX 763
HERMISTON, OREGON 97838

PARTY CHIEF
CURTIS FAVOREL

NOTES

WITNESS
RICK SMITH

SURVEYOR'S SEAL

REGISTERED
PROFESSIONAL
LAND SURVEYOR

G. Dennis Edwards

OREGON
JULY 16, 1971
G. DENNIS EDWARDS
9 5 1
RENEWS 12/31/2003

03-50-9