

Form 874-9—Revised May, 1918

U. S. DEPARTMENT OF AGRICULTURE
FOREST SERVICE

Umatilla NATIONAL FOREST ✓

CORNERS OF THE PUBLIC SURVEY

T. 1A R. 36E N Mer.

Section Corner common to Sections

34, 35, 2, and 3

Corner consists of a Mound of rock (not) in place

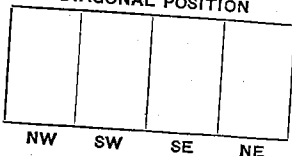
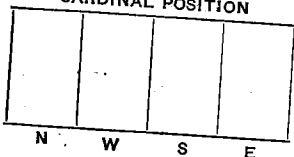
State condition Good

Dimensions above ground 12 inches.

Sketch grooves, letters, figures, or notches, on proper face or edge.

CARDINAL POSITION

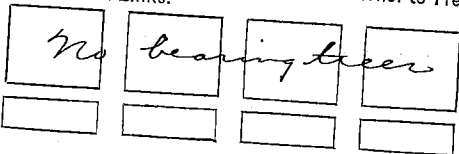
DIAGONAL POSITION



Mound of _____ is located _____

Pits are located _____

Sketch markings of Bearing Trees (or Rocks) in proper box and fill blanks below, giving bearings from Corner to Trees and Distances in Links.



Species _____

Diameter _____

Bearing _____

Distance _____

Do you believe this to be a genuine Land Office Corner? Yes

If not, why? _____

J. D. Monroe
Signature.

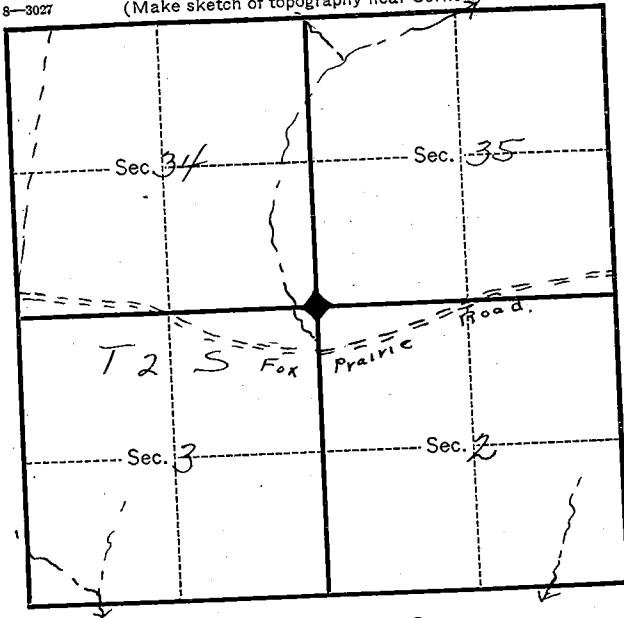
June 29, 1929
Date.

J. D.
Title.

T. 12 R. 36E N. Mer.

8-3027

(Make sketch of topography near Corner.)



Metal Location Poster is on a 4P
tree 14 inches diameter, on the SW
side of the tree
from which this Corner bears A 34 N
125 links chains distant.

Give any further facts which will aid in finding this
Corner again.

The corner is in
an open rocky glade on
a west slope in a 4P
type breaking into a
branch of Cowley creek.
The Fox Prairie Road,
runs about 15 chains
south of this corner.
A cruiser's log being on
the road

Index File No. Z-17

CORNER RECORD (SEARCH)
(Ref. FSM 7151.4)

Tract or Survey No. _____
Cor. No. Z-17 ^{22 82}

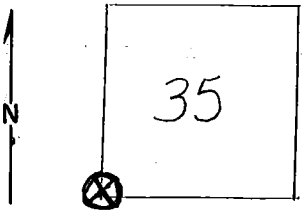
T 1 S. R. 36 E.

R.D. Pendleton County Umatilla

Merid. Willamette

N.F. Umatilla State Oregon

CORNER DIAGRAM



DESCRIBE CORNER MONUMENT FOUND

Stone, 20" x 12" x 6"; on surface; 2 notches on east edge, distinct.

DESCRIBE BEARING TREES OR OTHER OFFICIAL ACCESSORIES FOUND

Tumbled down mound around corner stone approx. 3' diam at base and 1' high.

PHOTO IDENTIFICATION DATA

Photo No. EQO(9/5/66)10-248

Filed At. _____

Object Ident. 2" pine.

Ident. By Tom Sutherland

Signature

DESCRIBE CORNER LOCATION RELATIVE TO NEAR-BY FEATURES, ALSO HOW TO REACH CORNER

Corner is about 1 ch. west of edge of timber on an open hillside.

PLANE COORDINATE POSITION DATA

State _____ Zone _____

X _____

Y _____

Estab. By _____

Agency

Signature
Ken Magoon

Title
Eng. Aide

Division
USFS Umatilla N.F. S.O.

Headquarters

Date
9/17/69

7100-52 (3/68)



CORNER RECORD (PERPETUATION)

MONUMENT: DESCRIBE NEW MONUMENT SET, OR WORK DONE TO PRESERVE EXISTING MONUMENT

Painted red "X" on corner stone.
Rebuilt rock mound to 2' high, 3' diam.

ACCESSORIES : DESCRIBE NEW BT's WITNESS OBJECTS ETC. ESTABLISHED, OR WORK DONE TO PRESERVE EXISTING EVIDENCE

Posted Attention; corner location sign (along blazed line 88 links from mound).

Work Done By Mike Lilly Title Engr. Aid Date 8/22/69 State Registration No. or Agency

Certified Cor. Record Prepared ? Yes No Filed At: Date

REMARKS

Pin pricked a 2" DBH ponderosa pine, N. 65° E., 31 links from corner stone.

Index File No. Z-17 T. 1 S. R. 36 E. M. Will. Tract or Surv. No.

Cor. Z-17