

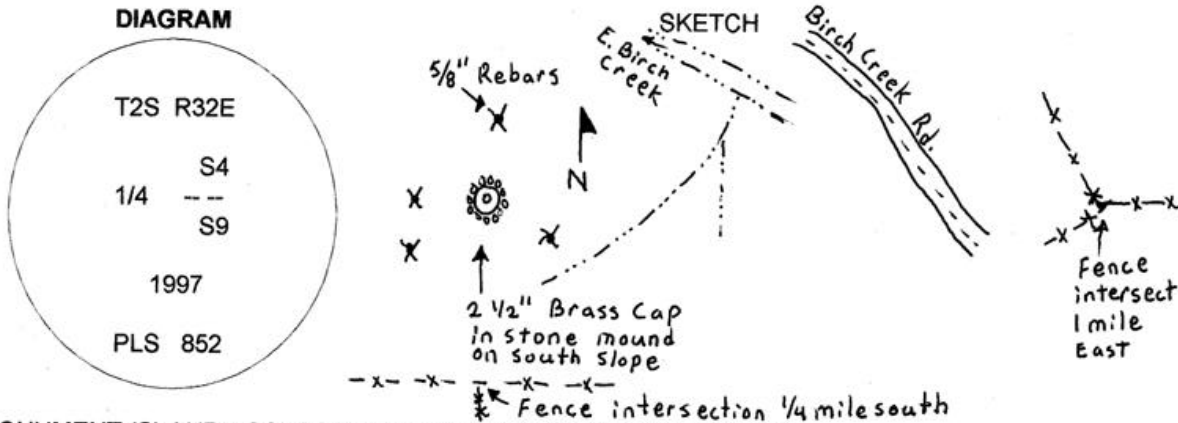
OREGON CORNER REFORMATION FORM

Section 4 Township 2S Range 32E
 County Umatilla Date: April 25, 1997

Corner Designation: 2S32 E11 Condition Report Only
 Not found
 1/4 Corner to sections 4, and 9 T2S, R32E W.M. x Remonumented
 Unrecorded
 Surveyed in
 x Referenced out

Previous Renewals / Surveys, etc.
 Corner originally set by David P. Thompson under contract No. 106 Dated August 16, 1864.
 Set stone 24 x 18 x 10 for 1/4 section corner.

Monument and Accessories found: (condition and source)
 A stone 24 x 18 x 10 tipped over in a mound of stone on a south facing slope with very little grass or other rocks of any size. This corner is in line with a East bound fence 1 mile to the East and a South bound fence 1/4 of a mile to the south. There were no visible marks on the stone.



MONUMENT (S) AND ACCESSORIES SET (Procedures and Description)
 Set a 1 1/4" x 30" Galvanized Iron Pipe with a 2 1/2" brass cap stamped as shown in the diagram above at the position of the stone. Raised a mound of stone around the monument.

For references, I set four 5/8" by 24" rebars with 1.25" red plastic caps stamped ORLS 852 and WALS 13922 as described below:
 a rebar bears N0°01'W, 64.57 feet;
 a rebar bears S76°27'E, 58.21 feet;
 a rebar bears S22°12'W, 70.97 feet;
 a rebar bears N89°14'W, 32.51 feet;

Monument and reference locations were surveyed with GPS receivers in stop and go mode.

The bearings are true. The distances are grid.

Location and comments

Compass Declination

Surveyors Seal

RECEIVED BY:
Umatilla County Surveyor
 Date:
 Rec'd By:
 No. 97-133-R

Firm / Agency
 Haddock Surveying
 Address
 P.O. Box 1574
 Pendleton, Or. 97801
 Party Chief
 Stephen K, Haddock

REGISTERED
 PROFESSIONAL
 LAND SURVEYOR

David L. Haddock
 OREGON
 JULY 12, 1988
 DAVID L. HADDOCK
 852

RECEIVED BY
Umatilla County Surveyor
 Date 7-97
 Rec'd by KK
 No. 97-133-R

Refer To 97-109-B