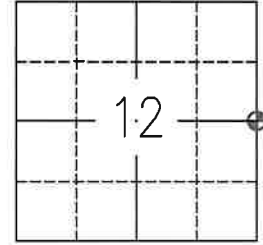


## CERTIFIED RECORD OF LAND CORNER MONUMENTATION

Beyond Engineering

T 2 S, R 31 E  
G - 25

RECOVERED BY	COORDINATE SYSTEM, ZONE, & UNIT	
Travis Foster, Oregon PLS	US State Plane 1983, Oregon North 3601, International foot	
GCDB ID	NORTHING	EASTING
700540	638553.154	8619626.007
LATITUDE	LONGITUDE	
N45°24'23.9441"	W118°52'26.9484"	



### RECORD OF ORIGINAL CORNER AND SUBSEQUENT HISTORY:

**Record No. 1 :** Exterior Lines of Tps. 1, 2 and 3 N. Ranges 32 and 33 E. and Tps. 1 and 2 S. Ranges 31 and 32 East executed by David P. Thompson in 1865 - "At 40.00 chains, set post for 1/4 section in mound of earth with charred stake, pits dug as per instructions."

**Record No. 2 :** Per instrument number 22-045-C, In a Boundary Adjustment survey completed by Stephen K. Haddock in 2022, Haddock documents new evidence found by the County Surveyor in 1916 - "In a resurvey of the township line in 1916 by County Surveyor Willard Bradley, Mr. Bradley reported finding an old mound and fence line running east at the northeast corner of Section 12. He also reported finding similar evidence near the east 1/4 corners of Sections 1 and 12." At the east 1/4 sec. cor. of 12, Haddock finds a fence corner with fences running N., S., and E. that Bradley had previously described and accepts it as evidence of the 1/4 cor.

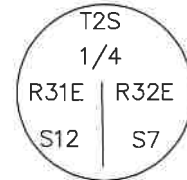
### DESCRIPTION OF CORNER EVIDENCE FOUND AND DESCRIPTION OF MONUMENT AND ACCESSORIES ESTABLISHED TO PERPETUATE THE LOCATION OF THIS CORNER:

**Recovery Date:** 10/25/2024

**Description:** The 1/4 sec. cor. of secs. 7 and 12 monumented with a corner of barbed wire fences extending N., S., and E., referenced in instrument no. 22-045-C. The fence corner is found in a mound of stone 4 ft. base, 1 ft. high.

Set an aluminum post, 2 1/2 in. diam., 30 ins. long, 16 in. in the ground, over an encoated plastic magnet on the SW corner of the fence corner at the corner point. The aluminum post was set in a mound of stone, 3 ft. base, 1 ft. high marked accordingly. Set a carsonite post on S. edge of monument.

\*Please note: The aluminum cap was stamped incorrect, It should read:

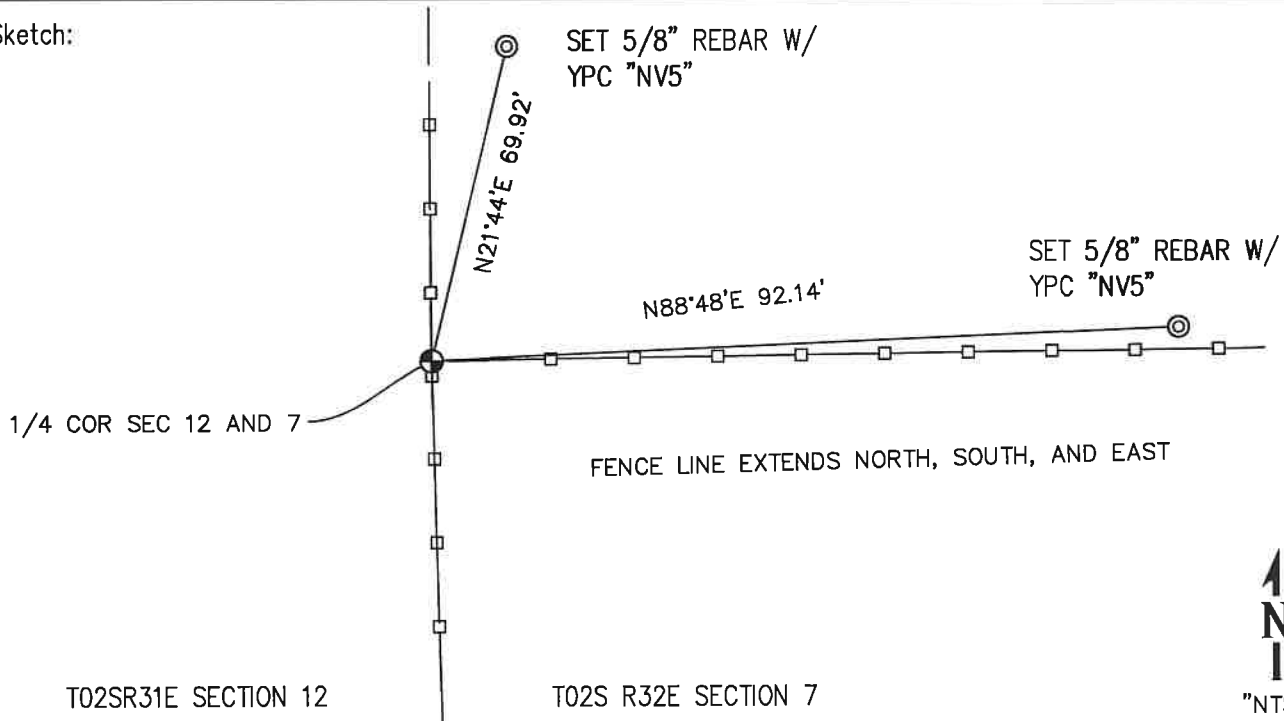


Set two reference monuments to perpetuate the 1/4 sec. cor.:

A 5/8 in. rebar with yellow plastic cap "NV5", bears N. 21° 44' E., 64.92 ft. dist., from corner.

A 5/8 in. rebar with yellow plastic cap "NV5", bears N. 88° 48' E., 92.14 ft. dist., from corner.

Sketch:



## CERTIFIED RECORD OF LAND CORNER MONUMENTATION



A . Set 30 X 2 1/2 in. aluminum post at the corner point alongside fence corner. As previously noted, the cap is stamped incorrectly.



B . The established section corner with an orange carsonite post.

UMATILLA COUNTY  
SURVEYOR

Date Received: 3/7/25  
Date Filled: 3/7/25  
By: CT  
File No. 25-025-R

REGISTERED  
PROFESSIONAL  
LAND SURVEYOR

*Travis P. Foster*  
OREGON  
JULY 9, 2002  
TRAVIS P. FOSTER  
54624

EXPIRES: 12/31/2025