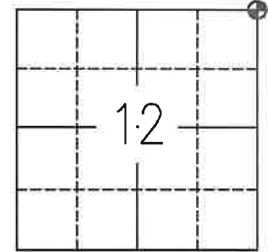


## CERTIFIED RECORD OF LAND CORNER MONUMENTATION

T 2 S, R 31 E  
E - 25

RECOVERED BY	COORDINATE SYSTEM, ZONE, & UNIT	
Travis Foster, Oregon PLS	US State Plane 1983, Oregon North 3601, International foot	
GCDB ID	NORTHING	EASTING
700600	641185.137	8619573.383
LATITUDE	LONGITUDE	
N45°24'49.9372"	W118°52'26.9435"	



### RECORD OF ORIGINAL CORNER AND SUBSEQUENT HISTORY:

**Record No. 1 :** Exterior Lines of Tps. 1, 2 and 3 N. Ranges 32 and 33 E. and Tps. 1 and 2 S. Ranges 31 and 32 East executed by David P. Thompson in 1865 - "At 80.00 chains, set stone 17x15x5 in. for corner to secs. 6, 7, 1, and 12."

**Record No. 2 :** Per instrument number 22-045-C, In a Boundary Adjustment survey completed by Stephen K. Haddock in 2022, Haddock documents new evidence found by the County Surveyor in 1916 - "In a resurvey of the township line in 1916 by County Surveyor Willard Bradley, Mr. Bradley reported finding an old mound and fence line running east at the northeast corner of Section 12." Haddock notes, "Found fence corner with fences N., S., and W.. Agrees with the GLO distances and the survey by Bradley. Survey instrument no. 11-112-C held the leaning corner post. This survey reports the intersection of the fence wires.

### DESCRIPTION OF CORNER EVIDENCE FOUND AND DESCRIPTION OF MONUMENT AND ACCESSORIES ESTABLISHED TO PERPETUATE THE LOCATION OF THIS CORNER:

**Recovery Date:** 10/25/2024

**Description:** The cor. of secs. 1, 6, 7, and 12 monumented with the intersection of barbed wire fences, with fences extending N., S., and W. Mound of stone around fence corner post, 4 ft. base, 1 ft. high. Fence post leaning heavily to the SW. Search for original stone in stone mound was unsuccessful.

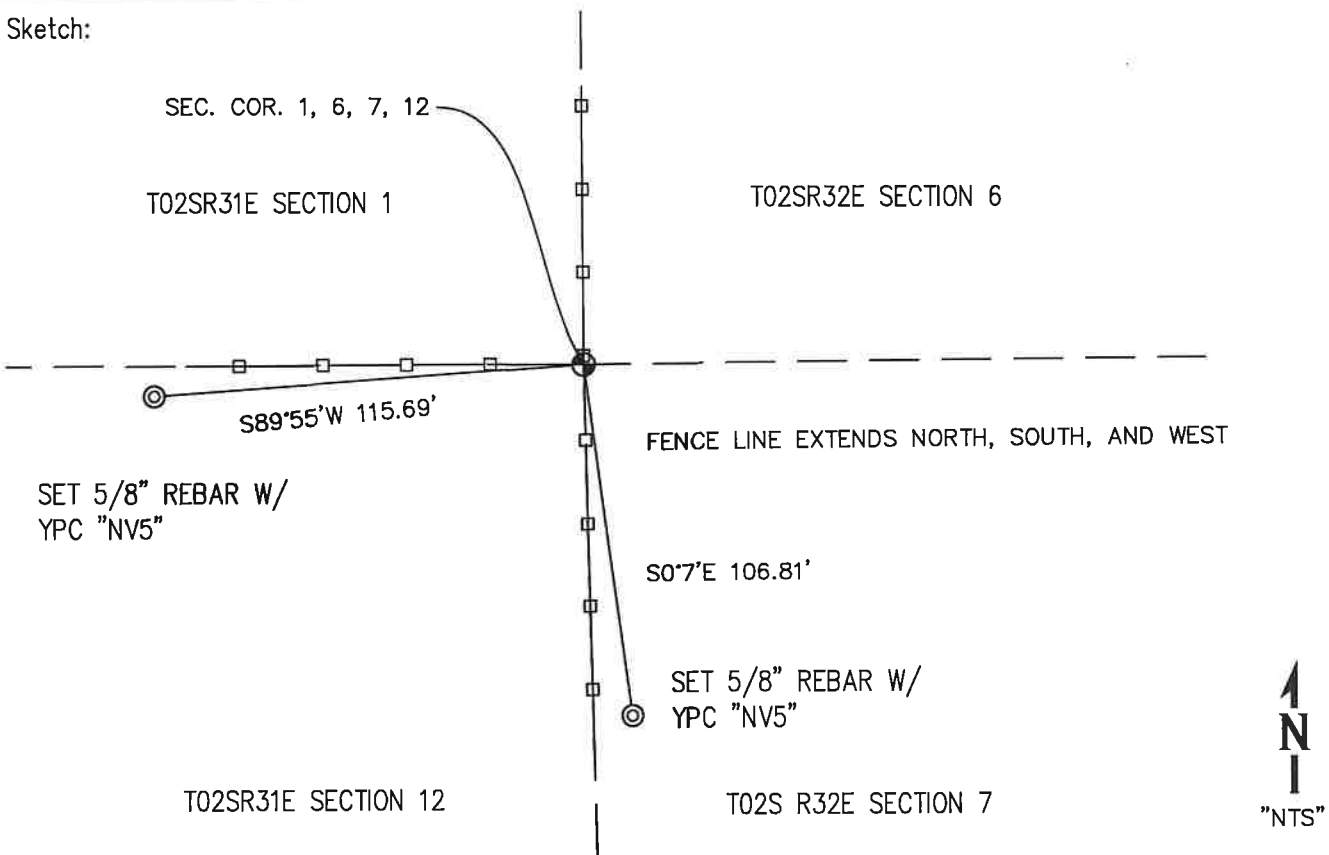
Set an aluminum post, 2 1/2 in. diam., 30 ins. long,, 12 ins. in the ground, over a encoated plastic magnet, in a mound of stone, 4 ft. base, 1 1/2 ft. high at the corner point. Set a carsonite post on N. edge of the mound of stone.

Set two reference monuments to perpetuate the sec. cor.:

A 5/8 in. rebar with yellow plastic cap "NV5", bears S. 89° 55' W., 115.69 ft. dist., from corner.

A 5/8 in. rebar with yellow plastic cap "NV5", bears S. 0° 7' E., 106.81 ft. dist., from corner.

Sketch:



**CERTIFIED RECORD OF LAND**  
**CORNER MONUMENTATION**



A . Set 30 X 2 1/2 in. aluminum post at the corner point alongside fence corner.



B . The established section corner with an orange carsonite post.

UMATILLA COUNTY  
SURVEYOR

---

Date Received: 3/7/25

Date Filled: 3/7/25

By: CT

File No. 25-024-R

REGISTERED  
PROFESSIONAL  
LAND SURVEYOR

*Travis P. Foster*

OREGON  
JULY 9, 2002  
TRAVIS P. FOSTER  
54624

EXPIRES: 12/31/2025