

Form 874-9—Revised May, 1918

U. S. DEPARTMENT OF AGRICULTURE
FOREST SERVICE

Umatilla NATIONAL FOREST

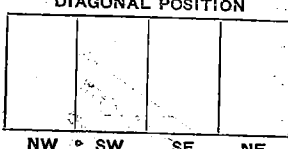
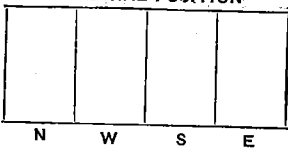
CORNERS OF THE PUBLIC SURVEY

T. *27* R. *37k* W. Mer.

1/4 Section Corner common to Sections
13, and *24*

Corner consists of a *Mound of Rock* in place
State condition *Fair*

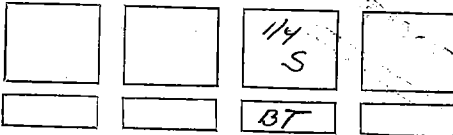
Dimensions above ground *4"* inches.
Sketch grooves, letters, figures, or notches, on proper face or edge.



Mound of _____ is located _____

Pits are located _____

Sketch markings of Bearing Trees (or Rocks) in proper box and fill blanks below, giving bearings from Corner to Trees and Distances in Links.



Species _____ *DF Magn*
Diameter _____ *2.2"*
Bearing _____ *54.2k*
Distance _____ *14 lbs*

Do you believe this to be a genuine Land Office Corner? *Yes*

If not, why? _____

J.A. Monroe
Signature

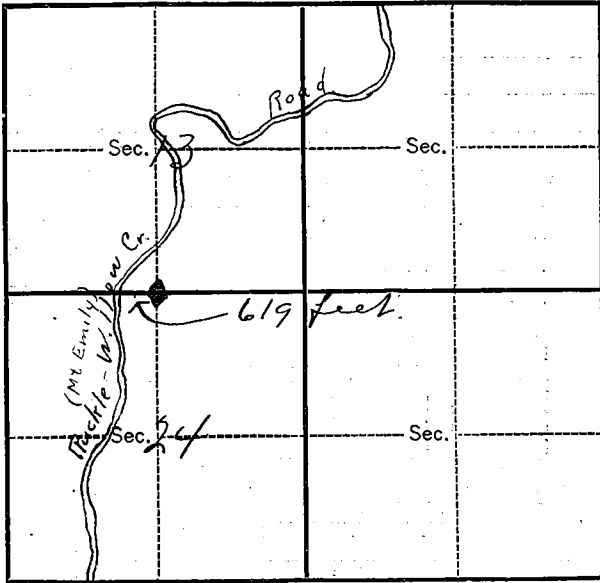
8-8-31
Date.

J.J.
Title

T. 27 R. 37 E W Mer.

8-3027

(Make sketch of topography near Corner.)



Metal Location Poster is on a W. 2.
tree 10 inches diameter, on the N West
side of Tree
from which this Corner bears N 54 W
15 lines distant.

Give any further facts which will aid in finding this
Corner again.

Corner is found in
a fir thicket on a
moderately steep
east slope.

Corner is 619 feet
east of Ruskle-Willow
Creek Road. A section
line sign board and
marker top have been
placed on
east side of road.