

R-7

OREGON CORNER RESTORATION FORM

Section 29 Township 2N Range 33E

County Umatilla Date 8-18-94

R-7

CORNER DESIGNATION

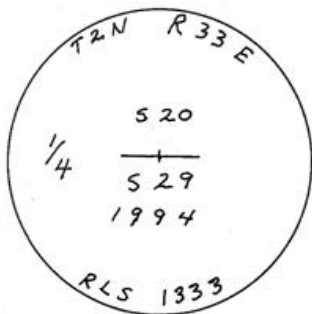
- Condition Report Only
- Not Found
- Renewed
- Unrecorded
- Surveyed In
- Referenced Out

Previous Renewals/Surveys, etc. _____

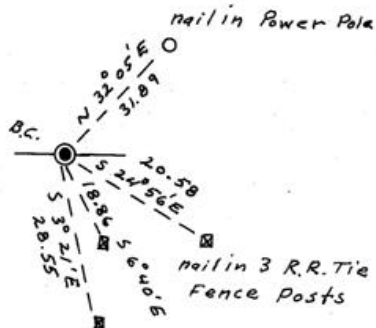
Monument(s) & Accessories Found: (Condition and Source)

Searched and did not find any evidence

Monument Detail



Sketch



Monument Set (Procedures and Description)

Set 2 1/2" brass cap on 1" G.I.P. 6" below paving

New Accessories

Alum. nail in power pole bears N 32°05'E - 31.89 ft.

Alum nail in R.R. tie post bears S24°56'E - 20.58 ft.

Alum. nail in R.R. tie post bears S6°40'E - 18.86 ft.

Alum. nail in R.R. tie post bears S3°21'E - 28.55 ft.

The Alum. nails are in yellow brg. Obj signs

Location & Comments

Surveyor's Seal

Corner is approx. _____ Compass Declination _____

4 ft. South of _____ Firm/Agency Don Staebler

centerline of a paved _____ Eng. - Surveyor

road _____ Address 1532 S. W. 41

RECEIVED BY _____ Pendleton, OR 97801

Umatilla County Surveyor _____ Party Chief D. L. Staebler

Date 8-94 Notes _____

Rec'd by DK Witness _____

No. 94-110-1

