

# OREGON CORNER RESTORATION FORM

COUNTY: Umatilla DATE: 01/10/03

CORNER DESIGNATION: N-3, the North One-Quarter Corner of Section 19, T2N, R33E, W.M..

PREVIOUS RENEWALS/SURVEYS ETC.: Corner was most recently established by Currin and Noland under Special Contract dated May 4, 1887. Currin and Noland notes call for a charred stake, with pits and mound and a scribed stake. This corner may have been recovered or re-established by C.E. Redfield, U.S. Indian Service Survey in around 1918, but I find no notes for the Redfield recovery or re-establishment.

MONUMENT AND ACCESSORIES FOUND: None. Corner point falls in a fence line extending North-South.

## MONUMENT MARKING DETAIL:

T2N R33E  
S18  
1/4-----  
S19  
2003  
PLS 1106

## MONUMENT SET:

Re-established corner position holding existing North-South fence line for departure, on line with the re-established Northeast and Northwest Corners of Section 19. At the corner point, set a 2 1/2" brass cap on 1 1/4" by 30" galv. iron pipe buried 24" in the ground. Cap is marked as shown on "Monument Marking Detail".

## New Accessories:

A 5/8" by 24" rebar with yellow plastic cap marked "OR PLS 1106 WA PLS 17372" bears North., 25.6'. Wired "bearing object" sign to the rebar. This rebar is in a North-South fence line. Southwest corner of a cement masonry unit well house bears N 43 1/2° E., 136.0'.

A 3/4" brass washer stamped "PLS 1106", nailed 1 foot above ground line to the West face of Pacific Power and Light Company power pole number 184001 bears S 69 1/2° E 61.7'. Nailed "bearing object" sign to the power pole.

A 3/4" brass washer stamped "PLS 1106", 2 ft. above ground line, nailed to a 3" by 14" wood plank on the West side of a railroad tie fence corner bears South., 35.1'. Nailed "bearing object" tag to the wood plank.

## LOCATION AND COMMENTS:

Corner falls in a North-South fence line, about 50 feet North a road extending East-West.

## STATE PLANE COORDINATES, OREGON NORTH, NAD 83(91), International Feet.

N = 726513.75  
E = 8653208.04

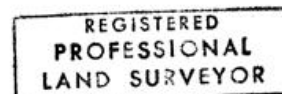
FIRM: William R. Wells, PLS  
P.O. Box 1696  
Pendleton, OR 97801

COMPASS DECLINATION: 18° East

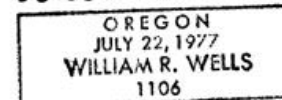
Surveyor's Seal

Witnesses: Jason Wells, LSIT

√2N33N3



*William R. Wells*



*renews 6-30-04*

03-51-9