

9-13

OREGON CORNER RESTORATION FORM

Section 9 & 10 Township 2 N Range 33E

County Umatilla Date Jan. 1994

9-15

CORNER DESIGNATION

- Condition Report Only
- Not Found
- Renewed
- Unrecorded
- Surveyed In
- Referenced Out

Previous Renewals/Surveys, etc. _____

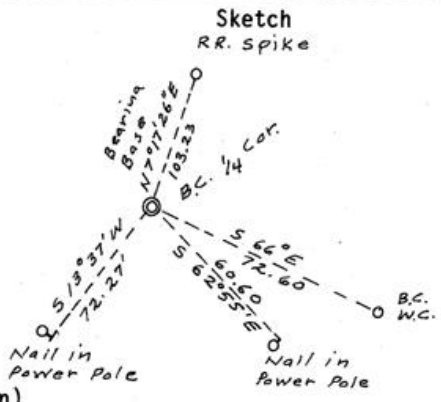
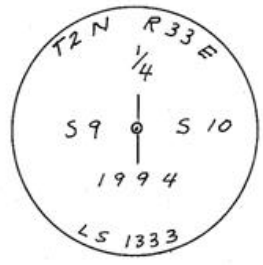
Monument(s) & Accessories Found: (Condition and Source)

Found $2\frac{1}{2}$ " brass cap W. C. on 1" pipe stamped "N 66° 00' W 72.60' W.C."

Found R.R. spike in paving N 7° 17' 26" E. 103.23 ft. from the corner.

Info. from Bill Wells L.S. 1106

Monument Detail



Monument Set (Procedures and Description)

Set $2\frac{1}{2}$ " brass cap on 1" x 30" G.I.P. 6" below paved surface in a C.I. monument box with a lid.

New Accessories

1. set alum. nail in middle of bearing object sign on N.E. face of power pole S.E. 60.60 ft. from corner
2. Set alum. nail in middle of bearing object sign on E. face of power pole S. W. 72.27 ft. from the corner

Location & Comments

Corner is just S. of _____ Compass Declination _____
 centerline of E.W. road and Firm/Agency Don Staebler
 on W. edge of N.-S. road in _____ Engineer-Surveyor
 the paving _____ Address 1532 S. W. 41

RECEIVED BY _____ Pendleton, OR 97801
Umatilla County Surveyor Party Chief Don Staebler
 Date 2-94 Notes _____
 Rec'd By KK Witness _____
 No. 94-08-M

Surveyor's Seal

**REGISTERED
PROFESSIONAL
LAND SURVEYOR**

Donald L. Staebler

OREGON
SEPT. 23, 1977
DONALD L. STAEBLER
#1333