

OREGON CORNER RESTORATION FORM

Section 9 Township 2N Range 33E

County Umatilla Date Jan. 1994

CORNER DESIGNATION

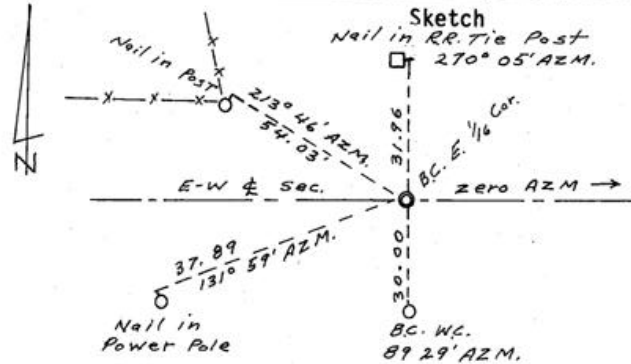
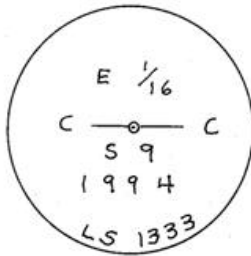
- Condition Report Only
- Not Found
- Renewed
- Unrecorded
- Surveyed In
- Referenced Out

Previous Renewals/Surveys, etc. _____

Monument(s) & Accessories Found: (Condition and Source)

Found 2 1/2" brass cap W.C. on 1" pipe 30.00 ft. south of corner.

Monument Detail



Monument Set (Procedures and Description)

Set 2 1/2" brass cap on 1" x 30" G.I.P. 6" below paving surface in a C.I. monument box with lid.

New Accessories 1. Set alum. nail in middle of a bearing object sign on N.W. face of power pole S. W. 37.89 ft. from the corner.

2. Set alum. nail in middle of a bearing object sign on N. E. face of fence post N. W. 54.03 from the corner.

3. Set alum. nail in middle of a bearing object sign on E. face of R.R. tie fence post N. 31.96 ft. from the corner.

Location & Comments

Corner is on centerline of the paved road Compass Declination _____ Firm/Agency Don Staebler Engineer-Surveyor

RECEIVED BY Umatilla County Surveyor Address 1532 S. W. 41 Pendleton, OR 97801

Date 2-94 Party Chief Don Staebler

Rec'd By RR Notes _____

No. 94-08-M Witness _____

Surveyor's Seal



Donald L. Staebler

