

**CORNER RESTORATION FORM**

Section E ¼ Sec. 13

Township 2 North

Range 32E

County Umatilla

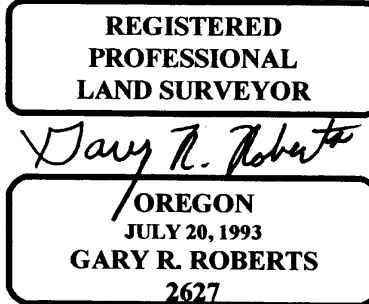
Date Feb. 27, 2002

Corner Designation L-25

**Location and Comments**

From the intersection of Goad Road and U.S. Highway 30, Travel Southerly on Goad Road for approximately 2.0 miles. The corner is approximately 150 feet southwest of Patawa Creek where it flows under the bridge on Goad Road, is east of the traveled portion of Goad Road, and is set approximately 3" below the surface of the gravel shoulder of a paved road approach leading east in the southerly radius.

**Surveyor's Seal**

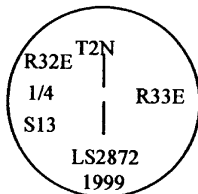


- Condition Report Only
- Not Found
- Renewed
- Unrecorded
- Surveyed In
- Referenced Out

**Previous Renewals/Surveys, etc.** The most recently approved GLO record was by L. E. Wilkes, U. S. Surveyor, who in 1917 found a stone marked ¼ on west face and set an iron post with brass cap 45 ½ links west for a witness corner to the ¼ corner of Section 13 only. In 1992 (Survey #92-92-C), Bill Wells found no remaining evidence of the corner and re-established it by single proportion, setting a brass cap. In the late 1990's, Wells' monument was destroyed by road construction.

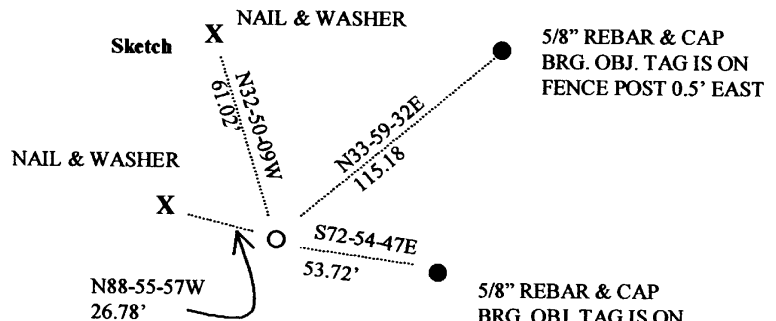
**Monuments & Accessories Found: (Condition and Source)** Found a 2" aluminum cap on 5/8" iron rebar set by PLS 2872 in 1999. No record was found in the County surveyor's Office. I also found an aluminum nail with brass washer stamped 1106 and bearing object tag nailed to PP&L power pole 139561(nail is now obstructed by a steel band); and an aluminum nail with brass washer stamped 1106 nailed to a corral post. The other two accessories referred to by Wells in his restoration form have been destroyed.

**Monument Detail**



STATE PLANE COORDINATES  
NAD '83('91) OREGON NORTH ZONE  
INTERNATIONAL FEET

N728916.77  
E8650722.00



NOTE: Bearings are grid rotated 1-14-39 Clockwise to true

**Monument Set (Procedures and Description)** None

**New Accessories** A nail and aluminum washer (nail is stamped 52; washer is stamped PP&L CO. 60 FT.) on PP&L pole #139561 bears N88-55-57W, 26.78 feet; a 5/8" X 30" iron rebar with yellow plastic cap marked "UCPWD...LS 2627" bears S72-54-47E, 53.72 feet; a 5/8" X 30" iron rebar with yellow plastic cap marked "UCPWD...LS 2627" bears N33-59-32E, 115.18 feet. Wells' nail and brass washer on the corral post bears N32-50-09W, 61.02 feet. New bearing object tags were placed near all 4 accessories.

Compass Declination N/A

Firm/Agency Umatilla County  
Department of Public Works

Address 3920 Westgate

Pendleton, Oregon 97838

Party Chief Gary Roberts

Notes Gary Roberts

Witness *FRANCIS*

**RECEIVED BY**  
Umatilla County Surveyor

Date 3-02

Rec'd By RR

No 02-52-R

05  
26  
05

*Karen A. Harms*