

Index

File No. E-13

**CORNER RECORD (SEARCH)**

(Ref. FSM 7151.4)

Tract or

Survey No. \_\_\_\_\_ Cor. No. \_\_\_\_\_

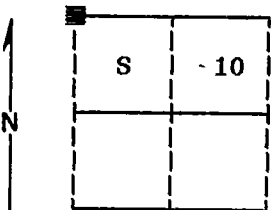
T 1S \_\_\_\_\_ R. 37E \_\_\_\_\_

R.D. WALLA WALLA \_\_\_\_\_ County UMATILLA \_\_\_\_\_

Merid. WILLAMETTE \_\_\_\_\_

N.F. UMATILLA \_\_\_\_\_ State OREGON \_\_\_\_\_

**CORNER DIAGRAM**



**DESCRIBE CORNER MONUMENT FOUND**

Found a stone 14x10x7 inches marked with 3 grooves on one face and 5 grooves on another.

**DESCRIBE BEARING TREES OR OTHER OFFICIAL ACCESSORIES FOUND**

Found a 50 inch diameter Ponderosa Pine root hole S32°W, 87 links with tree dead, down and very rotted approximately 20 feet Southwest of the root hole with no marks visible.

**DESCRIBE CORNER LOCATION RELATIVE TO NEAR-BY FEATURES, ALSO HOW TO REACH CORNER**

Corner falls on open West hillside approximately 250 feet West of the top of the ridge, with dim road on top of ridge, approximately 1320 feet South of the 022 road.

**PHOTO IDENTIFICATION DATA**

Photo No. \_\_\_\_\_

Filed At. \_\_\_\_\_

Object Ident. \_\_\_\_\_

Ident. By \_\_\_\_\_

*Signature* \_\_\_\_\_

**PLANE COORDINATE POSITION DATA**

State \_\_\_\_\_ Zone \_\_\_\_\_

X \_\_\_\_\_

Y \_\_\_\_\_

Estab. By \_\_\_\_\_

*Agency* \_\_\_\_\_

*Signature* \_\_\_\_\_

Title  
**Surveyor**

Division \_\_\_\_\_

Headquarters \_\_\_\_\_

Date \_\_\_\_\_

FS-7100-52 (3/68)

8-24-89

## CORNER RECORD (PERPETUATION)

**MONUMENT: DESCRIBE NEW MONUMENT SET, OR WORK DONE TO PRESERVE EXISTING MONUMENT**

Set a 2½"x30" aluminum pipe with aluminum cap marked as shown:  
Pipe is set 21 inches in the ground.

T1S	R37E
S 4	S 3
S 9	S 10
1989	
OPLS 644	

Raised mound of stone around monument, 3 ft. base to top of cap.  
Buried the original corner stone South and alongside of monument.

**ACCESSORIES : DESCRIBE NEW BT's WITNESS OBJECTS ETC. ESTABLISHED, OR WORK DONE TO PRESERVE EXISTING EVIDENCE**

New BTs:

A 12 inch diameter Ponderosa Pine bears N13°E, 122.20 feet marked T1S R37E S3 BT  
A 14 inch diameter Douglas Fir bears S48°E, 190.60 feet marked T1S R37E S10 BT  
A 11 inch diameter Ponderosa Pine bears S24°W, 49.20 feet marked T1S R37E S9 BT  
A 11 inch diameter Douglas Fir bears N80°W, 62.47 feet marked T1S R37E S4 BT  
Painted a 6 inch red band around all bearing trees and attached 54-3 and 54-9 signs.

Set a steel fence post approximately 5 feet North with 54-9 sign attached.

Work Done By D.I. Griffith Title Surveyor Date 8-20-89 State Registration No. OPLS 644  
or Agency \_\_\_\_\_

Certified Cor. Record Prepared? Yes  No  Filed At: Umatilla Co. Surveyor's Office Date 9-89

REMARKS

Index File No. E-13 T. 1S

R. 37E W.M.

Tract or Surv. No.

Cor.

Index  
File No. E-13  
T 1S R. 37E  
Merid. WILL

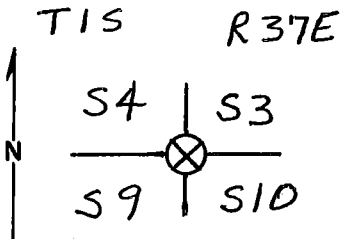
CORNER RECORD (SEARCH)

(Ref. FSM 7151.4)

Tract or  
Survey No. \_\_\_\_\_  
Cor.  
No. \_\_\_\_\_

R.D. WALLA WALLA County UMATILLA  
N.F. UMATILLA State OREGON

CORNER DIAGRAM



DESCRIBE CORNER MONUMENT FOUND

STONE OF RECORD SIZE ON THE SE EDGE OF A MOUND OF STONES. THE CORNER STONE IS MARKED WITH 3 DISTINCT GROOVES ON SOUTH FACE & 3 DISTINCT GROOVES ON EAST FACE.

DESCRIBE BEARING TREES OR OTHER OFFICIAL ACCESSORIES FOUND

ORIGINAL 50" PINE IS DOWN. NO MARKS REMAIN. ROOT HOLE BEARS S32°W, 57.4 ft. PLACED B.T. SIGN ON ~~THE~~ DOWN TREE, WHICH HAS BROKEN & SLID DOWN HILL 20 ft.

DESCRIBE CORNER LOCATION RELATIVE TO NEAR-BY FEATURES, ALSO HOW TO REACH CORNER

PLACED A LOCATION POSTER ON A 40" PONDEROSA PINE S78°W, 50 ft. FROM CORNER. THIS TREE HAS BEEN OPENED TO A FIRE SCAR WITH A CHAIN SAW, BUT IS NOT A B.T. NOTE: THE GROOVES ON THE STONE ARE 3/4" LONG & SPACED 1 1/4" APART.

PHOTO IDENTIFICATION DATA

Photo No. \_\_\_\_\_  
Filed At. \_\_\_\_\_  
Object Ident. \_\_\_\_\_  
Ident. By \_\_\_\_\_  
*Signature*

PLANE COORDINATE POSITION DATA

State \_\_\_\_\_ Zone \_\_\_\_\_  
X \_\_\_\_\_  
Y \_\_\_\_\_  
Estab. By \_\_\_\_\_  
*Agency*

Signature Dennis L. Gaylord Title PLS 1636 Division 5.0, Headquarters 7-16-86 Date 7-16-86 FS-7100-52 (3/68)

**CORNER RECORD (PERPETUATION)**

**MONUMENT: DESCRIBE NEW MONUMENT SET, OR WORK DONE TO PRESERVE EXISTING MONUMENT**

9

**ACCESSORIES : DESCRIBE NEW BT'S WITNESS OBJECTS ETC. ESTABLISHED, OR WORK DONE TO PRESERVE EXISTING EVIDENCE**

10

Work Done By. \_\_\_\_\_ Title \_\_\_\_\_ Date \_\_\_\_\_ State Registration No. or Agency \_\_\_\_\_

Certified Cor. Record Prepared ? Yes No Filed At: \_\_\_\_\_ Date \_\_\_\_\_

11

**REMARKS**

12

Index File No. T. R. M. Tract or Surv. No. Cor. \_\_\_\_\_

13

USDA-FOREST SERVICE

Index

File No. F-13

CORNER RECORD (SEARCH)

(Ref. FSM 7151.4)

Tract or Survey No. \_\_\_\_\_

Cor. No. E-13

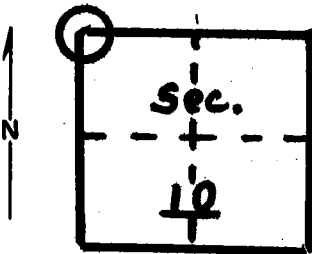
T 1S R. 37E

R.D. Pendleton County Umatilla

Merid. Willamette

N.F. Umatilla State Oregon

CORNER DIAGRAM



DESCRIBE CORNER MONUMENT FOUND

Material: None

DESCRIBE BEARING TREE OR OTHER OFFICIAL ACCESSORIES FOUND

Down rotten, burnt stump in SW quadrant. Possible bearing tree but could find no blaze or scribing. Only tree large enough to be B.T.

PHOTO IDENTIFICATION DATA

Photo No. \_\_\_\_\_

Filed At. \_\_\_\_\_

Object Ident. \_\_\_\_\_

Ident. By \_\_\_\_\_

*Signature*

PLANE COORDINATE POSITION DATA

State \_\_\_\_\_ Zone \_\_\_\_\_

X \_\_\_\_\_

Y \_\_\_\_\_

Estab. By \_\_\_\_\_

*Agency*

Signature  
Bill Moore

Title  
Eng. Tech.

Division \_\_\_\_\_

Headquarters \_\_\_\_\_

Date

5/77

7100-52 (3/68)

**CORNER RECORD (PERPETUATION)**

**MONUMENT: DESCRIBE NEW MONUMENT SET, OR WORK DONE TO PRESERVE EXISTING MONUMENT**

9

**ACCESSORIES : DESCRIBE NEW BT'S WITNESS OBJECTS ETC. ESTABLISHED, OR WORK DONE TO PRESERVE EXISTING EVIDENCE**

10

Work Done By \_\_\_\_\_ Title \_\_\_\_\_ Date \_\_\_\_\_ State Registration No. or Agency \_\_\_\_\_

Certified Cor. Record Prepared ? Yes No Filed At: \_\_\_\_\_ Date \_\_\_\_\_

11

**REMARKS**

12

Index File No. T. R. M. Tract or Surv. No. Cor. \_\_\_\_\_

13