

USDA-FOREST SERVICE

Index

File No. A-13

**CORNER RECORD (SEARCH)**

(Ref. FSM 7151.4)

Tract or

Survey No. \_\_\_\_\_

No. A-13

T 1S R. 37E.

R.D. Pendleton

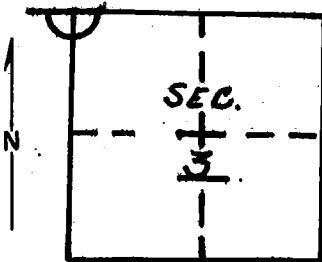
County Umatilla

Merid. Willamette

N.F. Umatilla

State Oregon

**CORNER DIAGRAM**



**DESCRIBE CORNER MONUMENT FOUND**

None.

**DESCRIBE BEARING TREES OR OTHER OFFICIAL ACCESSORIES FOUND**

14" stunted p. pine in S.E. quadrant with closed blaze on NW face (poss. bearing tree). Down rotten fir where other bearing trees would be. Location fits quad. map and there is a blaze line east.

**PHOTO IDENTIFICATION DATA**

Photo No. \_\_\_\_\_

Filed At. \_\_\_\_\_

Object Ident. \_\_\_\_\_

Ident. By \_\_\_\_\_

Signature. \_\_\_\_\_

~~# ref. west.~~

**DESCRIBE CORNER LOCATION RELATIVE TO NEAR-BY FEATURES, ALSO HOW TO REACH CORNER**

**PLANE COORDINATE POSITION DATA**

State \_\_\_\_\_ Zone \_\_\_\_\_

X \_\_\_\_\_

Y \_\_\_\_\_

Estab. By \_\_\_\_\_

Agency \_\_\_\_\_

Signature  
**Bill Moore**

Title **Eng, Tech,** Division \_\_\_\_\_ Headquarters \_\_\_\_\_

Date  
**5/77**

7100-52-(3/68)

## CORNER RECORD (PERPETUATION)

MONUMENT : DESCRIBE NEW MONUMENT SET, OR WORK DONE TO PRESERVE EXISTING MONUMENT

9

ACCESSORIES : DESCRIBE NEW BT'S WITNESS OBJECTS ETC. ESTABLISHED, OR WORK DONE TO PRESERVE EXISTING EVIDENCE

10

Work Done By \_\_\_\_\_ Title \_\_\_\_\_ Date \_\_\_\_\_ State Registration No.  
or Agency \_\_\_\_\_

Certified Cor. Record Prepared ? Yes No Filed At: \_\_\_\_\_ Date \_\_\_\_\_ 11

REMARKS

12

Index File No. T. R. M. Tract or Surv. No. Cor. 13