

USDA-FOREST SERVICE

Index  
File No. V-1  
T 15 R. 36E  
Merid. W

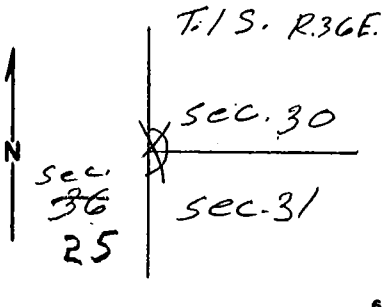
CORNER RECORD (SEARCH)

(Ref. FSM 7151.4)

Tract or  
Survey No. \_\_\_\_\_  
Cor. No. V-1

R.D. Pendleton County Umatilla  
N.F. Umatilla State Oregon

CORNER DIAGRAM



DESCRIBE CORNER MONUMENT FOUND

BLM BRASS CAP  
1984

DESCRIBE BEARING TREES OR OTHER OFFICIAL ACCESSORIES FOUND

38" P.P. N38°E 39 LINKS  
10" P.P. S33°E 76 LINKS.

BT TAGS ON TREES

PHOTO IDENTIFICATION DATA

Photo No. \_\_\_\_\_  
Filed At. \_\_\_\_\_  
Object Ident. \_\_\_\_\_  
Ident. By \_\_\_\_\_  
*Signature*

PLANE COORDINATE POSITION DATA

State \_\_\_\_\_ Zone \_\_\_\_\_  
X \_\_\_\_\_  
Y \_\_\_\_\_  
Estab. By \_\_\_\_\_  
*Agency*

DESCRIBE CORNER LOCATION RELATIVE TO NEAR-BY FEATURES, ALSO HOW TO REACH CORNER

Signature H.E. Candell Title \_\_\_\_\_ Division Pendleton Headquarters Pendleton Date 11-10-90 7100-52-(3/68)