

Form 874-9—Revised May, 1918

U. S. DEPARTMENT OF AGRICULTURE  
FOREST SERVICE

Unatilla NATIONAL FOREST

CORNERS OF THE PUBLIC SURVEY

T. 1 S R. 36 E W. M. Mer.

Section Corner common to Sections

20 21 28, and 29

Corner consists of a wooden stake (not) in place  
State condition good

Dimensions above ground 3x3x20 inches.  
Sketch grooves, letters, figures, or notches, on proper face or edge.

CARDINAL POSITION

DIAGONAL POSITION

--	--	--	--

N W S E

--	--	--	--

NW SW SE NE

Mound of \_\_\_\_\_ is located \_\_\_\_\_

Pits are located \_\_\_\_\_

Sketch markings of Bearing Trees (or Rocks) in proper box  
and fill blanks below, giving bearings from Corner to Trees  
and Distances in Links.


Species \_\_\_\_\_  
 Diameter \_\_\_\_\_  
 Bearing \_\_\_\_\_  
 Distance \_\_\_\_\_

Do you believe this to be a genuine Land Office Corner? Yes

If not, why? \_\_\_\_\_

\_\_\_\_\_

H. E. Vincent  
Signature.

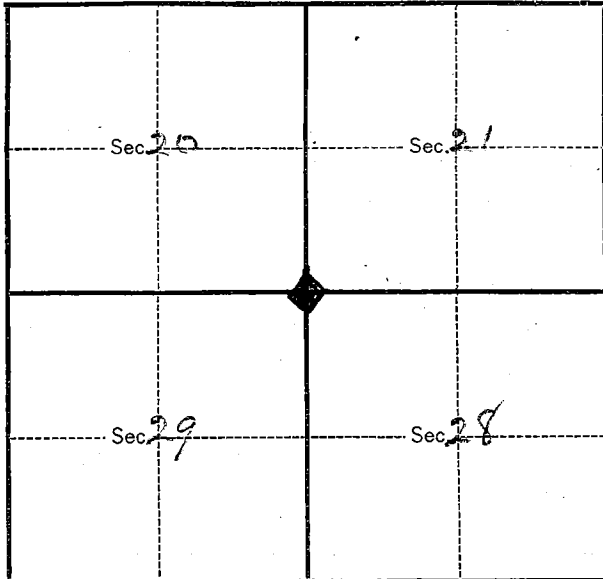
10/3/20  
Date.

\_\_\_\_\_  
Title.

T. 1 S R. 36 W. Mer

8-3027

(Make sketch of topography near Corner.)



Metal Location Poster is on a \_\_\_\_\_  
tree \_\_\_\_\_ inches diameter, on the \_\_\_\_\_  
side of \_\_\_\_\_  
from which this Corner bears \_\_\_\_\_  
\_\_\_\_\_ chains distant.

Give any further facts which will aid in finding this  
Corner again.

\_\_\_\_\_  
\_\_\_\_\_  
\_\_\_\_\_  
\_\_\_\_\_  
\_\_\_\_\_  
\_\_\_\_\_  
\_\_\_\_\_  
\_\_\_\_\_  
\_\_\_\_\_  
\_\_\_\_\_

USDA-FOREST SERVICE

Index

File No. R-9

T 1S R. 36E

Merid. Willamette

**CORNER RECORD (SEARCH)**

(Ref. FSM 7151.4)

Tract or

Survey No. \_\_\_\_\_

Cor.

No. \_\_\_\_\_

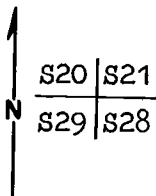
R.D. Pendleton

County Umatilla

N.F. Umatilla

State Oregon

CORNER DIAGRAM



DESCRIBE CORNER MONUMENT FOUND

2 1/2" Gal. steel pipe with a 3" Brass cap properly stamped and firmly set in the ground.

DESCRIBE BEARING TREES OR OTHER OFFICIAL ACCESSORIES FOUND

Orig. 14" Fir now 24" Wh. Fir S63W-27 lks. (to face) scribing visible on partially healed blaze.

Orig. 8" Fir now rotted stump hole N50W-33 lks..

Orig. 8" Fir now only a possible depression in the ground.

No evidence of the BT in Sec. 28 remains.

PLS 848 12" now 12" Lodgepole Pine snag N65E, 15.7 ft. scribing visible on partially healed double blaze. (con't on back)

DESCRIBE CORNER LOCATION RELATIVE TO NEAR-BY FEATURES, ALSO HOW TO REACH CORNER

From its junction with Rd. #31 follow Rd. #31 102 1 mile to dirt spur left-follow spur 0.15 mile to tag on right. Corner is 6 chains East.

PHOTO IDENTIFICATION DATA

Photo No. 480-207

Filed At. Umatilla N.F.

Object Ident. Two I.P.'s

Ident. By Larry V. Pendleton  
Signature

PLANE COORDINATE POSITION DATA

State \_\_\_\_\_ Zone \_\_\_\_\_

X \_\_\_\_\_

Y \_\_\_\_\_

Estab. By \_\_\_\_\_

Agency

Signature  
Larry V. Pendleton

Title  
Land Surveyor

Division  
Headquarters

Date  
10/82 7100-52-(3-68)

CORNER RECORD (PERPETUATION)

MONUMENT: DESCRIBE NEW MONUMENT SET, OR WORK DONE TO PRESERVE EXISTING MONUMENT.

(con't)

PLS 848 12" now 13" Wh.Fir snag S57E, 39.2 ft. scribing visible on partially healed double blaze.

PLS 848 12" Fir now 12" Wh.Fir N46W, 17.3 ft. scribing visible on partially healed double blaze. PLS 848 distances to face.

ACCESSORIES : DESCRIBE NEW BT'S WITNESS OBJECTS ETC. ESTABLISHED, OR WORK DONE TO PRESERVE EXISTING EVIDENCE

10" D-Fir N36E, 40.9 ft. scribed T1ST36ES21BT and with a 1" Brass disk stamped PLS 896.

8" Wh.Fir East 30.2 ft. scribed T1SR36ES28BT and with a 1" Brass disk stamped PLS 896.

Work Done By Larry D. Bishop Title Surveyor Date 10/82 State Registration No. 896  
or Agency

Certified Cor. Record Prepared? Yes No  Filed At: Date

REMARKS

Added 54-4 and BT signs and red paint to existing BT's as needed. Nailed 54-4 and BT sign to new BT's and painted band and blaze red.

Set guard posts South and West with signs 54-2 and 54-4.

Index  
File No. R-9

**CORNER RECORD (SEARCH)**

(Ref. FSM 7151.4)

Tract or  
Survey No. R 9

62  
Cor. No. 580  
Sec. 10

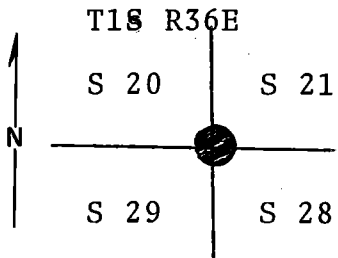
T 1 S R. 36 E

R.D. Pendleton County Umatilla

Merid. Willamette

N.F. Umatilla State Oregon

**CORNER DIAGRAM**



**DESCRIBE CORNER MONUMENT FOUND**

Brass cap set summer 1972. See reverse side of card.

**DESCRIBE BEARING TREES OR OTHER OFFICIAL ACCESSORIES FOUND**

Found 30" fir alive in good condition with scribing visible, bearing S63°W 17.9 ft. distance from the corner position.

Found remains of a fir, no scribing visible. Bearing N50°W 22' dist. from the corner position.

**PHOTO IDENTIFICATION DATA**

Photo No. \_\_\_\_\_  
Filed At. \_\_\_\_\_  
Object Ident. \_\_\_\_\_  
Ident. By \_\_\_\_\_  
*Signature*

**DESCRIBE CORNER LOCATION RELATIVE TO NEAR-BY FEATURES, ALSO HOW TO REACH CORNER**

Established corner position from live 30" fir.

**PLANE COORDINATE POSITION DATA**

State \_\_\_\_\_ Zone \_\_\_\_\_  
X \_\_\_\_\_  
Y \_\_\_\_\_  
Estab. By \_\_\_\_\_  
*Agency*

Signature

Title

Division

Headquarters

Date

7100-52 (3/68)



CORNER RECORD (PERPETUATION)

MONUMENT: DESCRIBE NEW MONUMENT SET, OR WORK DONE TO PRESERVE EXISTING MONUMENT

Set 30x2½" iron pipe with 3" brass cap marked as shown 26" in the ground for the corner to sec. 20, 21, 29 & 28 from which new BTs:

9

ACCESSORIES : DESCRIBE NEW BT's WITNESS OBJECTS ETC. ESTABLISHED, OR WORK DONE TO PRESERVE EXISTING EVIDENCE

A 12" lodgepole pine bears N65°E 15.7 ft dist. marked T1S R36E S21 BT

A 12" fir bears S57°E 39.2 ft. dist. marked T1S R36E S28 BT

A 12" fir bears N46°W 17.3 ft. dist. marked T1S R36E S20 BT

All distances taken to a brass washer in the blaze of each tree.

Set a steel fence post approx. 5' West of corner with Forest Boundary sign attached.

Used a steel tape and magnetic compass with declination = 20° E. 10

Work Done By D.M. Ferguson Title Land Surveyor Date 7/12/69 State Registration No. 848  
or Agency

Certified Cor. Record Prepared ? Yes No Filed At: Umatilla Co. Courthouse Date 11/16/72 11

REMARKS

12

Index File No.

T.

R.

M.

Tract or Surv. No.

Cor,

13