

Index

File No. A-23

CORNER RECORD (SEARCH)

(Ref. FSM 7151.4)

Tract or Survey No. _____ Cor. No. _____

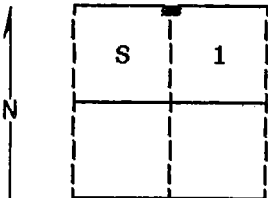
T 1S _____ R 36E _____

R.D. WALLA WALLA County UMATILLA

Merid. WILLAMETTE

N.F. UMATILLA State OREGON

CORNER DIAGRAM



DESCRIBE CORNER MONUMENT FOUND

Corner not previously established.

DESCRIBE BEARING TREES OR OTHER OFFICIAL ACCESSORIES FOUND

Corner not previously established.

PHOTO IDENTIFICATION DATA

12 616140A 787-56

Photo No. _____

Filed At. Ranger Office

Object 2" Dead Fir

Ident. By D. I. Griffith

Signature

PLANE COORDINATE POSITION DATA

State _____ Zone _____

X _____

Y _____

Estab. By _____

DESCRIBE CORNER LOCATION RELATIVE TO NEAR-BY FEATURES, ALSO HOW TO REACH CORNER

Corner falls on a timbered flat approximately 400 feet West and 500 feet East of private road.

Agent
Signature _____

Title

Division

Headquarters

Date

FS-7100-52 (3/68)

Surveyor

8-24-89

CORNER RECORD (PERPETUATION)

MONUMENT: DESCRIBE NEW MONUMENT SET, OR WORK DONE TO PRESERVE EXISTING MONUMENT

Set a 2½"x30" aluminum pipe with aluminum cap marked as shown:
Pipe is set 30 inches in the ground.

T1N R36E

¼ S 1
T1S R36E
1989
OPLS 644

ACCESSORIES : DESCRIBE NEW BT'S WITNESS OBJECTS ETC. ESTABLISHED, OR WORK DONE TO PRESERVE EXISTING EVIDENCE

New BTs:

A 15 inch diameter Douglas Fir bears S37°E, 39.98 feet marked ¼ S1 BT

A 15 inch diameter Western Larch bears S83°W, 24.57 feet marked ¼ S1 BT

Painted a 6 inch red band around all bearing trees and attached 54-3 and 54-9 signs.

Set a steel fence post approximately 5 feet East with 54-9 sign attached.

Work Done By D.I. Griffith Title Surveyor Date 8-18-89 State Registration No. OPLS 644
or Agency

Certified Cor. Record Prepared? Yes No Filed At Umatilla Co. Surveyor's Office Date 9-89

REMARKS

Witness: Jeff Petersen

Index File No. A-23 T. 1S

R. 36E W.M.

Tract or Surv. No.

Cor.