

OREGON CORNER RESTORATION FORM

Section 7 Township 1S Range 35E

County Umatilla Date 5/28/96

J-1

CORNER DESIGNATION

R.34E. R.35E.

S.12 | S.7 c.c.
S.18

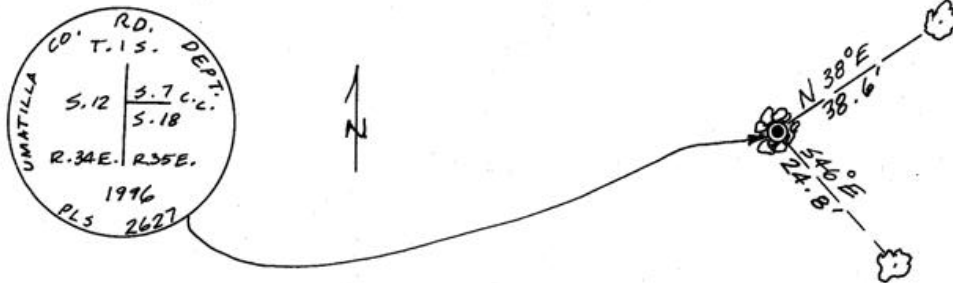
- Condition Report Only
- Not Found
- Renewed
- Unrecorded
- Surveyed In
- Referenced Out

Previous Renewals/Surveys, etc. Currin and Nolin, under Special Contract dated May 4, 1887, set basalt stone, 12"x10"x18", 8" in ground, for closing corner to Sections 7 and 18, marked C.C. with 4 notches on S. and 2 on N. edges. raised stone Monument(s) & Accessories Found: (Condition and Source) mound around it.

The remainder of the rock mound and a piece of the basalt stone with visible chisel marks, lying in the center of the rock mound was found. No other accessories were found or recorded. The other pieces of the basalt stone were either missing or could not be identified.

Monument Detail

Sketch



Monument Set (Procedures and Description)

A 2 3/8" Brass cap on a 1 1/4" x 30" G.I.P. was set at the location of the center of the rock mound. The monument protrudes from ground level approximately 12". The stones found in the original mound were used to construct a mound around the new monument. The chiseled stone segment was deposited in the mound on the west side of the new monument.

New Accessories

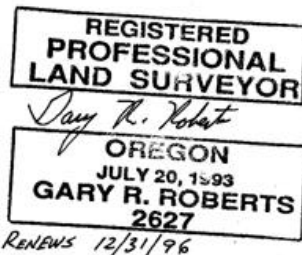
A 14" Ponderosa pine, scribed "T 1S R35E S7 CC BT", distance and bearing shown above, and a 5" white fir, scribed "T1S R35E S18 CC BT", distance and bearing shown above. Rock mound was re-constructed around new monument. "Bearing Object" tags attached to bearing trees and a metal fence post with "Do not disturb" tag attached set near corner.

Location & Comments

Turn south on gravel road going underneath railroad overcrossing (I-84) at McEacham. Take left-hand fork after crossing under overpass. Travel southwesterly 3 1/4 miles to 4-way intersection. Go straight at intersection approximately 0.9 miles. monument is south of and visible from the road.

Compass Declination 19 1/2° E
 Firm/Agency Umatilla County
 Department of Public Works
 Address 3920 Westgate
 Pendleton, Oregon 97801
 Party Chief Gary Roberts
 Notes Gary Roberts
 Witness Charlie Good

Surveyor's Seal



RECEIVED BY
 Umatilla County Surveyor
 Date 6-9-96
 Rec'd by KK
 File # 96-89-R