

USDA-FOREST SERVICE

Index

File No. A-01

CORNER RECORD (SEARCH)

(Ref. FSM 7151.4)

Tract or

Survey No. _____

Cor.

No. _____

T 15 R. 36E

R.D. WALLA WALLA County UMATILLA

Merid. WILLAMETTE

N.F. UMATILLA State OREGON

CORNER DIAGRAM



DESCRIBE CORNER MONUMENT FOUND

FND BLM BRASS CAP RISING 6" ABOVE GROUND.

FND 2 1/2" ALUMINUM CAPPED ALUMINUM PIPE BY U.S.F.S.
RISING 4" ABOVE GROUND 3.8 FT. NORTH OF BLM CORNER.
ALUM. CORNER STAMPED A.M.

DESCRIBE BEARING TREES OR OTHER OFFICIAL ACCESSORIES FOUND

14" W. FIR BEARS S52°W, 29.0 FT.,
B&S T1R35E S1 CC BT.

10 1/2" W. FIR BEARS S15 1/2°E, 19.8 FT.,
B&S T1R36E S6 CC BT.

PHOTO IDENTIFICATION DATA

Photo No. _____

Filed At. _____

Object Ident. _____

Ident. By _____

Signature

PLANE COORDINATE POSITION DATA

State _____ Zone _____

X _____

Y _____

Estab. By _____

Agency

DESCRIBE CORNER LOCATION RELATIVE TO NEAR-BY FEATURES, ALSO HOW TO REACH CORNER

3032 "Y" S AT WEST LINE OF S31. TAKE RIGHT
"Y" FROM 3032 SOUTHEASTERLY 1/2 MI. — CROSSES
POSTED LINE. CORNER IS 150 FT. EAST.

Signature
B. Sullivan

Title
LS 1848

Division

Headquarters

Date

5-31-85

7100-52-(3-68)

CORNER RECORD (PERPETUATION)

MONUMENT: DESCRIBE NEW MONUMENT SET, OR WORK DONE TO PRESERVE EXISTING MONUMENT

NONE

ACCESSORIES: DESCRIBE NEW BT'S WITNESS OBJECTS ETC. ESTABLISHED, OR WORK DONE TO PRESERVE EXISTING EVIDENCE

SET STEEL FENCE POST 3 FT. EAST OF CORNER.
ATTACHED SIGNS TO BT'S & POST. PAINTED RED BANDS

Work Done By B.A. SUTTON Title SURVEYOR Date 5-31-85 State Registration No. LS 1848
or Agency

Certified Cor. Record Prepared? Yes No Filed At:

Date

REMARKS

Index File No.

A-01

T. 15

R. 36E W.M.

Tract or Surv. No.

Cor.

CC 15

Index
File No. A-1

CORNER RECORD (SEARCH)

(Ref. FSM 7151.4)

Tract or Survey No. A 1 Cor. No. Sec 1

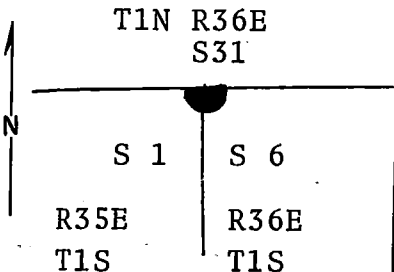
T 1 S R. 36 E

R.D. Pendleton County Umatilla

Merid. Willamette

N.F. Umatilla State Oregon

CORNER DIAGRAM



DESCRIBE CORNER MONUMENT FOUND

Set brass cap summer 1972. See reverse side.

● *See mon. file*

DESCRIBE BEARING TREES OR OTHER OFFICIAL ACCESSORIES FOUND

Found an 18" tamarack with all scribing visible, bearing S74°E 15.8 ft. dist. from the corner position.
Found a 40" fir down and rotten with reversed scribing clearly visible bearing S24°W 27 ft. dist. from the corner position.

PHOTO IDENTIFICATION DATA

Photo No. _____
Filed At. _____
Object Ident. _____
Ident. By _____

Signature

PLANE COORDINATE POSITION DATA

State _____ Zone _____
X _____
Y _____
Estab. By _____
Agency

DESCRIBE CORNER LOCATION RELATIVE TO NEAR-BY FEATURES, ALSO HOW TO REACH CORNER

Signature

Title

Division

Headquarters

Date

7100-52 (3/68)

4

5

Form 874-9—Revised May, 1918

U. S. Department of Agriculture
FOREST SERVICE

Umatilla NATIONAL FOREST

CORNERS OF THE PUBLIC SURVEY

T. 18 R. 36E W. Mer.

Section Corner ~~common to Sections~~

North west cor. of 6

Corner consists of a could not be (not) in place
State condition found.

Dimensions above ground _____ inches.

Sketch grooves, letters, figures, or notches, on proper face or edge.
CARDINAL POSITION DIAGONAL POSITION

N W S E

NW SW SE NE

Mound of _____ is located _____

Pits are located _____

Sketch markings of Bearing Trees (or Rocks) in proper box and fill blanks below, giving bearings from Corner to Trees and Distances in Links.

	<u>Not sketched</u>	<u>T15</u>	
	<u>cut</u>	<u>R36</u>	
		<u>56</u>	
		<u>BT</u>	

Real stump

Species WF WL

Diameter 32 28 in

Bearing S55W S60E

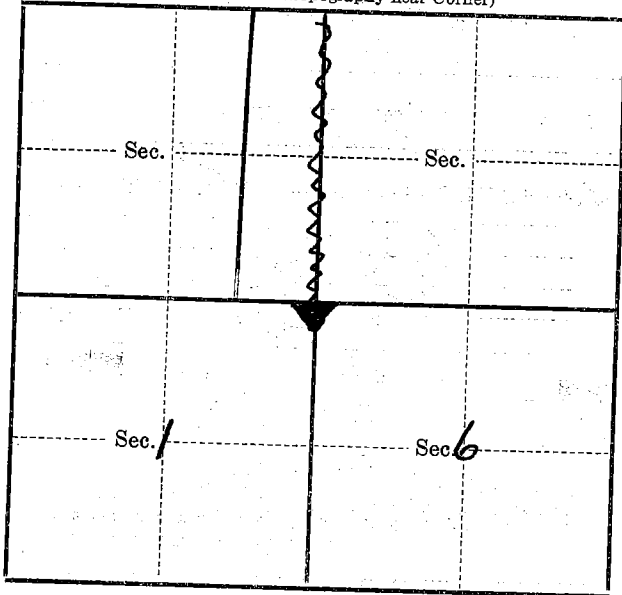
Distance 20 ft 15 ft.

Do you believe this to be a genuine Land Office Corner? Yes

If not, why? Location of corner
could be cut within 20 ft.

Oct 29/47 (Date) Dist Ranger (Title)

(Make sketch of topography near Corner)



Metal Location Poster is on a *W.F.*
 tree *.16* inches diameter, on the *North*
 side of *Corner*
 from which this Corner bears *South 10° E*
30 ft. distant.

Give any further facts which will aid in finding this
 Corner again.

*Corner shown on
 Pendleton District aerial
 photograph.*