

OREGON CORNER RESTORATION FORM

Section 10 Township 1S Range 34E
 County Umatilla Date: 11-04-2004

Corner Designation: T1SR34EG15
 Condition Report Only
 Not Found
 Remonumented
 Unrecorded
 Surveyed In
 Referenced Out

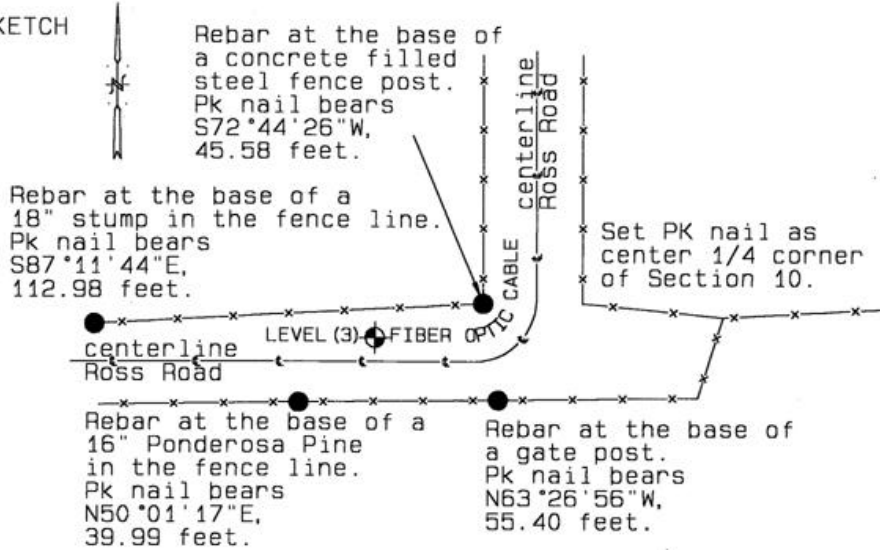
Previous Renewals / Surveys, etc.
 Corner not previously set.

Monument and Accessories Found: (condition and source)
 Corner not previously set.

DIAGRAM



SKETCH



MONUMENT (S) AND ACCESSORIES SET (Procedures and Description)

Set a 1.5" PK nail in the road over the Level 3 Fiber optic lines. (See attached photographs)

The MCI fiber optic cable line is located on the south side of the road.

REFERENCES SET:

Set four 5/8"x30" iron rebar with a 1.25" dia. red plastic cap stamped WALS 13922 and ORLS 0852.

As shown in sketch above. (See attached photographs)

Location and Comments

Compass Declination
 20°E

Surveyors Seal

Located at the 1/4 corner and center of Section 10 after Ross Road had turned from south to west.

REGISTERED
 PROFESSIONAL
 LAND SURVEYOR

RECEIVED BY:

Firm / Agency

David L. Haddock

Date: 1-05
 Rec'd By: KK
 No. 05-04-B

Haddock Surveying
 P. O. Box 1574
 Pendleton, OR 97801
 (541) 276-2174

OREGON
 JULY 12, 1968
 DAVID L. HADDOCK
 652